



Black Velvet Evening Dress with Royal Satin Cuff (KA0039_V8p09-009)



Short-Sleeved Dress with Scarf and Side Buttons (KA0039_V8p10-001)



Printed Calf-Length Dress with Shirred Pockets and Matching Coat (KA0039_V8p10-002)



Set of Sketches Depicting Two Capes and Printed Dress (KA0039_V8p10-003)



Calf-Length Shirt Dress with Pleated Side Panels (KA0039_V8p11-001)



Women's Ensemble with Bands of Shirring and Dot Bow (KA0039_V8p11-002)



Women's Ensemble with Sleeveless Jacket and Dotted Bow (KA0039_V8p11-003)



Women's Navy Blue Wool Ensemble with Dot Bow and Bands of Shirring (KA0039_V8p12-003)



Navy Jersey Two-Piece Women's Ensemble with Quilted Details (KA0039_V8p13-004)



Long-Sleeved Black Wool Dress with Notched Lapel and Braided Belt (KA0039_V8p13-005)



Women's Ensemble with Short-Sleeved Drop Shoulder Coat and Calf-Length Dress (KA0039_V8p14-004)



Brown Wool Women's Suit with Pink Taffeta Blouse (KA0039_V8p14-007)



Black Velvet Evening Dress with Bow of Dotted Pink Faille (KA0039_V8p14-009)



Black CrÃ©pe Dress with Off-White Chiffon Gilet and Pale Blue Satin Sash (KA0039_V8p15-001)



Print Dress with Butterfly Sleeves and Matching Coat (KA0039_V8p16-001)



Long-Sleeved Women's Ensemble with Organza Bow and Pleated Back Panel (KA0039_V8p16-002)



Long-Sleeved Dress with Wide Pointed Lapel and Rope Belt (KA0039_V8p16-003)



Navy Wool Women's Ensemble with Sleeveless Jacket and Dotted Bows (KA0039_V8p16-004)



Brown and White Printed Dress with Short Sleeves and Matching Coat (KA0039_V8p16-005)



Black Wool Short-Sleeved Dress with Taffeta Bow and Matching Coat (KA0039_V8p16-006)



Navy Wool Tunic Dress with PiquÃ© Accents (KA0039_V8p17-002)



Navy Wool Women's Ensemble with Short-Sleeved Drop Shoulder Coat (KA0039_V8p17-003)



Black Wool Shirt Dress with PiquÃ© Accents and Pleated Side Panels (KA0039_V8p17-004)



White Crepe Two-Piece Women's Ensemble with Printed Flag Accents (KA0039_V8p17-006)



Black Floral Printed Crepe Dress with Print Appliqués and Colored Georgette Girdle (KA0039_V8p56-002)



Set of Four Sketches Depicting a Dress and Two Coats (KA0039_V8p56-005)



Navy Wool Women's Ensemble with Red and White Dots and Large Red Organdie Bow (KA0039_V8p57-002)



Women's Ensemble with Black Dress, Black and White Print Jacket, and Fuschia Accents (KA0039_V8p57-003)



Black and Oyster White Print Dress with Blue Linen Coat (KA0039_V8p58-001)



Navy and White Print Ensemble with Twisted Silver Buttons (KA0039_V8p58-002)



Beige Mixed Tweed Ensemble with Cape Back and Wood Buttons (KA0039_V8p58-003)



Set of Five Sketches Depicting a Black and Gold Women's Ensemble and White Shantung Coat (KA0039_V8p58-004)



Black Cloth Women's Ensemble with Flower Printed Crêpe Top and Cape-Sleeved Jacket (KA0039_V8p59-001)



Navy Wool Ensemble with "Coolie" Coat and Bamboo Buttons (KA0039_V8p59-002)



Women's Ensemble with Wrap Coat and Rose Inserts (KA0039_V8p59-003)



Calf-Length Dress with Detachable Pleated Cape and Blue, Beige, and Black Checked Taffeta Sash (KA0039_V8p60-003)



Set of Three Sketches Depicting a Tan Caracal Fur Coat and Black and White Printed Evening Jacket (KA0039_V8p61-001-003)



Flower Print Wrap Dress with Loose Flower Embellishments Around the Edges (KA0039_V8p61-002)



Light Blue Coat with Wide Nutria Cuffs (KA0039_V8p61-003)



Black Floral Printed CrÃpe Dress with Print AppliquÃs and Colored Georgette Girdle (KA0039_V8p61-005)



Black Wool Suit with Chamois Fur Collar and Sleeve Cuffs (KA0039_V8p74-003)



Blue Crepe Evening Dress with Sunburst Pleated Skirt (KA0039_V9p03-007)



Black Crepe Evening Dress with Wine Colored Velvet Flowers and Rose Taffeta Sash (KA0039_V9p05-008)



Brown Crepe Dress with Leg-of-Mutton Sleeves and Bow Accents (KA0039_V9p08-005)



Black Women's Ensemble with Nutria Collar and Wool Tassels (KA0039_V9p08-006)



Deep Blue Crepe Romaine Evening Dress with Attached Scarf (KA0039_V9p08-009)



Brown Crepe Evening Dress with Rose Taffeta Bows (KA0039_V9p16-009)



Women's Ensemble with Green Velvet Blouse and Black Jacket with Sealskin (KA0039_V9p19-005)



Women's Grey Oxford Tweed Suit with Pressed Godet Pleats (KA0039_V9p21-005)



Grey Crepe Evening Dress with Sunburst Pleats (KA0039_V9p22-008)



Women's Dotted Wool Ensemble with Yellow Flower Embellishments (KA0039_V9p27-003)



Black Taffeta Evening Dress with Two Large Pink Rose Embellishments (KA0039_V9p27-007)



Evening Dress with Rosette and Bow Embellishments (KA0039_V9p31-007)



Green Lace Tunic Dress with Very Full Skirt Panel (KA0039_V9p36-008)



Brown Wool Women's Suit with Silk Cord Girdle and Beaver Fur Sleeves (KA0039_V9p37-002)



Pink Crêpe Evening Dress with Fringed Capelet (KA0039_V9p46-004)



Women's Black Wool Suit with Green Accents (KA0039_V9p47-002)



Women's Grey Wool Suit with Persian Lamb Accents (KA0039_V9p48-003)



Evening Dress with Black Velvet Front and Taffeta Back (KA0039_V9p49-007)



Tan Wool Women's Suit with Nutria Sleeve Cuffs (KA0039_V9p50-001)



Black Velvet Evening Dress with Lacings and Metal Eyelets (KA0039_V9p50-009)



Women's Suit with Putty Color Coat and Black Dress (KA0039_V9p51-002)



Women's Black Wool Ensemble with Velvet Accents (KA0039_V9p54-001)



Brown Net Evening Dress with Pleated Panels and Tea Rose Embellishments (KA0039_V9p55-009)



Pleated Black Evening Dress with Beaded Cord Trim (KA0039_V9p56-004)



Pale Green Evening Dress with Blue Floral Embellishments and Tulle Wrap (KA0039_V9p61-009)



Women's Brown Wool Ensemble with Brown Leather Accents and Yellow Scarf (KA0039_V9p66-001)



Set of Six Sketches Depicting a Variety of Bodice Designs (KA0039_V9p67-006)



Women's Chartreuse Wool Evening Jacket with Silver Skirt (KA0039_V8p01-005)



Women's Black Wool Coat with Tassels (KA0039_V8p04-003)



Chenille Striped Taffeta Evening Dress with Oversized Bows (KA0039_V8p04-009)



Green and Metallic Gold Evening Dress with Ruffled Sleeves (KA0039_V8p08-007)



Women's Black and White Dot Print CrÃ©pe Suit with Shirring (KA0039_V8p10-005)



Black and Maroon Wool Dress with Matching Coat (KA0039_V8p11-006)



Black Gros de Londre Evening Ensemble with Lily of the Valley Embellishments (KA0039_V8p16-009)



Pale Blue CrÃ©pe Dress with Surplice Waist and Pink Flower Corsage (KA0039_V8p19-006)



Women's Pale Blue Wool Suit with Wide Grey Fox Fur Cuffs (KA0039_V8p20-007)



Black Wool Women's Suit with Long Box Coat and Printed Sash Belt (KA0039_V8p28-001)



Brown Wool Suit with Long-Sleeved Shirt Dress and Matching Jacket (KA0039_V8p28-002)



Women's Navy and Blue Checked Ensemble with Sunburst Pleated Skirt (KA0039_V8p28-004)



Grey Wool Long-Sleeved Wrap Dress with Silver Buttons and Chain Belt (KA0039_V8p28-005)



Black CrÃ©pe Evening Dress with Red and White Embroidered Roses (KA0039_V8p28-007)



Black CrÃ©pe Evening Dress with Black Paillette Gilet and Tassel Belt (KA0039_V8p30-009)



Black Wool Women's Suit Featuring Shirt Dress with Maroon CrÃ©pe Pocket Accents (KA0039_V8p31-002)



Short-Sleeved Black CrÃ©pe Dress with Box-Pleated Skirt (KA0039_V8p35-006)



Wool Women's Suit with Lacing Details and Matching Coat with Tiered Puff Sleeves (KA0039_V8p36-001)



Black Velvet Evening Dress with Violet Velvet Choux and Opera Gloves (KA0039_V8p37-009)



Long-Sleeved Blue Shirt Dress with White Bowtie and Matching Pillbox Hat (KA0039_V8p38-005)



Gold Evening Ensemble with Silver Star Paillette Embroidery (KA0039_V8p43-002)



Pale Blue Taffeta and Gros de Londres Evening Dress (KA0039_V8p44-001)



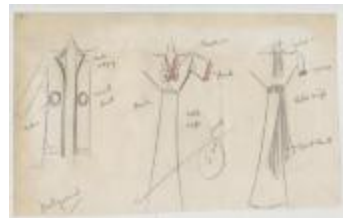
Black CrÃ©pe Evening Dress with Pink and Black Striped Taffeta Accents (KA0039_V8p44-003)



Black CrÃ©pe Evening Dress with Velvet Sash (KA0039_V8p45-002)



Wide-Legged Women's Jumpsuit of Navy Linen (KA0039_V8p50-003)



Set of Three Sketches Depicting a Wool Coat, Black CrÃ©pe and Pink Dress, and Black CrÃ©pe and Gold Dress (KA0039_V8p54-001)



Evening Dress with Purple Velvet Bodice and Black Velvet Skirt (KA0039_V8p06-008)



White CrÃ©pe Dress with Pleated Skirt and Red, Green, and Silver Embroidery (KA0039_V8p65-001)



Black Cloque Dress with Silver Embellishments on Neck, Sleeve Cuffs, and Pockets (KA0039_V8p70-001)



Black CrÃ©pe Long-Sleeved Dinner Dress with Queen Anne Neckline and Side Zipper (KA0039_V8p72-001)



Black Cloque Dress with Draping and Sash at Waist (KA0039_V8p72-003)



Black CrÃ©pe Women's Ensemble with Long Vest and Paillettes (KA0039_V8p73-001)



Black CrÃ©pe Dress and Jacket with Tulip Embroidery (KA0039_V8p79-004)



Printed Day Dress with Box Pleated Skirt and Pleated Organdie Trim (KA0039_V9p02-001)



Black Wool Women's Suit with Pink Piping and Printed Pink Blouse (KA0039_V9p05-001)



Black Wool Women's Suit with Paillette and Fur Accents (KA0039_V9p10-002)



Black Dinner Dress with Silver Embroidery and Small Bows (KA0039_V9p12-008)



Black CrÃ©pe Dress with Silver Grecian Leaf Embroidery (KA0039_V9p14-002)



Black Net Evening Dress with Bright Blue Flower Appliques (KA0039_V9p14-006)



Turquoise Crepe Dress with Sash Belt and Wide Sleeves with Openwork (KA0039_V9p14-007)



Black Wool Dress with Paillette, Stone, and Jewel Embellishments (KA0039_V9p17-003)



Black CrÃ©pe Evening Dress with Lace Bow and Sleeves (KA0039_V9p17-007)



Women's Wool Coat with Braided Edges (KA0039_V9p19-003)



Sheer Black Wool Dress with Long Bell Sleeves and Pink Floral Embellishments (KA0039_V9p26-001)



Black Wool Dress with Black Velveteen Tunic Jacket (KA0039_V9p30-004)



Black Taffeta Tunic Dress with Black Velvet Underskirt (KA0039_V9p30-006)



Black Wool Women's Suit with Fur and Cellophane Trim (KA0039_V9p36-001)



Long-Sleeved Green CrÃ©pe Dress with Cord Belt and Tassels (KA0039_V9p36-006)



Wine Colored Velvet Dress with Plaid Taffeta Scarf (KA0039_V9p39-005)



Red Velvet Tunic Evening Dress with Pink Flower Embellishment (KA0039_V9p40-007)



Black Wool and Velvet Evening Dress with Chrysanthemum Applique (KA0039_V9p42-007)



Black Wool Women's Suit with Broadtail Trim and Bone Buttons (KA0039_V9p42-009)



Black Wool Women's Suit with Seal Fur and Pale Blue Crepe Accents (KA0039_V9p44-002)



Multicolor Striped Dress with Silver Chain and Fringe Tassel Belt (KA0039_V9p44-003)



Blue Taffeta Evening Dress with Pink Flower Corsage and Released Box Pleats (KA0039_V9p48-009)



Black Crêpe Tunic Dress with Green Velvet Gilet (KA0039_V9p49-001)



Navy Evening Dress with Gold Star Print and Cerise Bow (KA0039_V9p50-004)



White Cloché Velvet Evening Dress with Carnations (KA0039_V9p54-009)



Black Taffeta Evening Dress with Pink Flowers and Black Net Coat with Embroidered Stars (KA0039_V9p57-008)



Black Wool Women's Suit with Quilted Jacket and Jewel Embellishments (KA0039_V9p64-005)



Black Tucked Crepe Dress with Gold and Black Tooled Leather Belt (KA0039_V9p67-004)



Knee-Length Grey Crepe Dress with Silver Cabochon Belt (KA0039_V9p67-005)