



Long-Sleeved Dress with Bows (KA0067_000025)



Sleeveless Evening Dress with Wide Ribbon (KA0067_000241)



Printed Evening Dress with Wide Ribbon (KA0067_000242)



Evening Dress with Bows and Box Tucks (KA0067_000243)



Sleeveless Evening Dress with Separated Torso (KA0067_000244)



Striped Women's Suit with Topstitching (KA0067_000245)



Evening Dress with Separated Torso (KA0067_000246)



Striped Evening Dress with Short Puffed Sleeves (KA0067_000247)



Evening Dress with Shirred Bodice and Sleeves (KA0067_000248)



Sleeveless Evening Dress with Shirred and Pleated Panels (KA0067_000249)



Navy Linen Evening Dress with Pleated Skirt Tier (KA0067_000250)



Striped Evening Dress with Very Full Skirt (KA0067_000251)



Floor-Length Evening Dress with Long Fins
(KA0067_000252)



Red Striped Evening Dress
(KA0067_000253)



Long-Sleeved "Handkerchief" Dress
(KA0067_000254)



Long-Sleeved Dress with Tucked Panels
(KA0067_000255)



Women's Ensemble with Collarless Jacket
and High Cossack Hat (KA0067_000256)



Women's Ensemble with Tall Cossack Hat
(KA0067_000257)



Skirt and Jacket with Folded Tails
(KA0067_000258)



Women's Ensemble with Pleated Skirt and
Cutaway Coat (KA0067_000259)



Women's Ensemble with Lace Blouse and
Cutaway Coat (KA0067_000260)



Women's Suit with Small Strip
Embellishments (KA0067_000261)



Women's Ensemble with Pleated Gilet
(KA0067_000262)



Women's Ensemble with Pleated Gilet and
Flap Closures (KA0067_000263)



Women's Ensemble with Ruffled Collar
(KA0067_000264)



Women's Ensemble with Floor-Length Coat
(KA0067_000265)



Toque and Floral Hats (KA0067_000267)



Striped Evening Dress with Full Skirt
(KA0067_000268)



Skirt and Cutaway Jacket with Folded Tails
(KA0067_000269)



Women's Ensemble with Collarless
Cutaway Coat (KA0067_000270)



Women's Ensemble with Bows and Pleated
Panels (KA0067_000271)



Long Blouse with Drawstring Skirt
(KA0067_000272)



Long-Sleeved Dress with Small Buttons
and Hidden Pockets (KA0067_000273)



Long-Sleeved Dress with Multiple Plackets
(KA0067_000274)



Long-Sleeved Dress with Decorative Bands
and Small Buttons (KA0067_000275)



Long-Sleeved Dress with Shirred Yoke and
Skirt Panel (KA0067_000276)



Long-Sleeved Dress with Zigzag Trim
(KA0067_000277)



Short-Sleeved Dress with Tucked Panels
(KA0067_000278)



Short-Sleeved Dress with Draped Skirt and
Gathered Bodice (KA0067_000279)



Short-Sleeved Evening Dress with Tiered
Skirt (KA0067_000280)



Floor-Length Dress with Long Contrasting
Fins (KA0067_000281)



Evening Coat with Full Skirt
(KA0067_000282)



Floor-Length Dress with Shirred Skirt and
Plunging V-Neckline (KA0067_000283)



Evening Dress with Draped Skirt and
Embellished Bodice (KA0067_000284)



Long-Sleeved Dress with Ruffled Collar
(KA0067_000285)



Women's Suit with Wide Ruffled Collar
(KA0067_000286)



Women's Suit with Wide Pointed Collar
(KA0067_000287)



Evening Dress with Decorative Trim
(KA0067_000288)



Evening Dress with Diamond Shaped Pattern (KA0067_000289)



Evening Dress with Full Skirt and Decorative Trim (KA0067_000290)



Women's Evening Ensemble with Draped Collar (KA0067_000291)



Women's Evening Ensemble with Wide Stripes and Sleeve Cuffs (KA0067_000292)



Women's Evening Ensemble with Full Skirt and Ruffled Peplum Jacket (KA0067_000293)



Evening Dress with Buttoned Waist and Oversized Bow (KA0067_000294)



Long-Sleeved Evening Dress with Contrasting Stripe and Waistband (KA0067_000295)



Women's Evening Ensemble with Full Skirt and Peplum Jacket (KA0067_000296)



Women's Evening Ensemble with Full Skirt and Decorative Bands (KA0067_000297)



Evening Dress with Full Skirt and Short Sleeves (KA0067_000298)



Women's Evening Ensemble with Bolero Jacket and Large Bow (KA0067_000299)



Women's Evening Ensemble with Fitted Jacket and Wide Stripes (KA0067_000300)



Black Evening Dress with Red, Green, and Blue Stripes (KA0067_000301)



Floor-Length Evening Dress with Full Skirt and Stripes (KA0067_000302)



Evening Dress with Full Skirt and Decorative Bands (KA0067_000303)



Evening Dress with Open Skirt and Cartridge Embellishments (KA0067_000304)



Evening Dress with Buttoned Bodice and Opened Skirt (KA0067_000305)



Evening Dress with Buttoned Bodice and Narrow Trim (KA0067_000306)



Evening Dress with Full Skirt and Bands of Tucks or Pleats (KA0067_000308)



Evening Dress with Full Skirt and Wide Ribbons (KA0067_000309)



Evening Dress with Small Bows and Bands of Stripes or Tucks (KA0067_000310)



Evening Dress with Wide Ribbon Bows (KA0067_000311)



Evening Dress with Pleated Panel and Bands of Tucks (KA0067_000312)



Women's Evening Ensemble with Bolero Jacket and Bows (KA0067_000313)



Women's Evening Coat with Full Skirt and Pleated Pockets (KA0067_000314)



Women's Evening Coat with Decorative Trim (KA0067_000315)



Women's Evening Coat with Full Skirt and Decorative Trim (KA0067_000316)



Women's Evening Ensemble with Lace and Long Pink Gloves (KA0067_000317)



Sleeveless Evening Dress with Full Lace Skirt (KA0067_000318)



Lace Evening Dress with Heavy Braid or Cord (KA0067_000319)



Striped Evening Dress with Full Skirt and Wide Neckline (KA0067_000320)



Short-Sleeved Dress with Draped Panels (KA0067_000325)



Long-Sleeved Dress with Leaf Pattern (KA0067_000326)



Dress with Drawstring Pockets and Keyhole Neckline (KA0067_000327)



Evening Dress with Pleated, Striped, or Shirred Panels (KA0067_000328)



Long-Sleeved Evening Dress with Flounced Skirt (KA0067_000329)



Skirt with Layer of Pleating
(KA0067_000330)



Pleated Evening Dress with Buttoned
Tunic Layer (KA0067_000331)



Evening Dress with Full Skirt and Rows of
Pleats or Tucks (KA0067_000332)



Women's Lace Evening Ensemble with
Bolero Jacket (KA0067_000333)



Short-Sleeved Lace Evening Dress
(KA0067_000334)



Double Net Evening Dress with Wide
Neckline (KA0067_000335)



Women's Evening Ensemble with Collared
Bolero Jacket (KA0067_000336)



Women's Evening Ensemble with Lace
Bolero Jacket (KA0067_000337)



Women's Lace Evening Ensemble with
Long Pink Gloves (KA0067_000338)



Long-Sleeved Evening Dress with Lace
(KA0067_000339)



Long-Sleeved Evening Dress with Yoke
(KA0067_000340)



Evening Dress with Wrapped Bodice and
Embellished Shoulders (KA0067_000341)



Floor-Length Dress with Shirred Yoke (KA0067_000342)



Evening Dress with Floor-Length Peplum Skirt (KA0067_000343)



Evening Dress with Tiered Tunic and Embellished Bodice (KA0067_000344)



Tiered Evening Dress with Short Embellished Sleeves (KA0067_000345)



Women's Evening Ensemble with Tiered Skirt (KA0067_000346)



Asian and Polynesian Inspired Ensembles (KA0067_000347)



Printed Tunic Ensembles or Pajamas (KA0067_000348)



Printed Pajamas with Short-Sleeved Bolero Top (KA0067_000349)



Women's Lounge Ensemble with Checked Jacket (KA0067_000350)



Floor-Length Dress with Cropped Jacket (KA0067_000351)



Floor-Length Dress with Wide Shawl (KA0067_000352)



Floor-Length Dress with Obi Belt and Short Kimono Sleeves (KA0067_000353)



Ensemble with Pajama Pants or Long Skirt (KA0067_000354)



Short-Sleeved Printed Dress with Surplice Bodice (KA0067_000355)



Women's Ensemble with Wide-Legged Checked Pants (KA0067_000356)



Pleated Evening Dress with Solid Panels (KA0067_000357)



Floor-Length Pleated Dress with "Coolie" Coat (KA0067_000358)



Evening Dress with Full Skirt and Striped Panels (KA0067_000359)



Evening Dress with Decorative Trim (KA0067_000360)



Long-Sleeved Dress with Decorative Bands (KA0067_000361)



Women's Wrap Coat with Shawl Collar (KA008601_MCB1_f06_02)



Yellow Plaid Ensemble with Pleated Skirt and Double-Breasted Jacket (KA008601_MCB2_f04_01)



Women's Ensemble with Pleated Skirt and Double-Breasted Jacket (KA008601_MCB2_f04_01overlay)



Woman's Head with Pillbox Hat (KA008601_MCB2_f04_01v)



Knee-Length Fitted Dress with Bell Sleeves
(KA008601_MCB2_f04_02)



Dress with Short Sleeves and Full Knee-
Length Skirt (KA008601_MCB2_f04_03)



Dress with Short Sleeves and Full Knee-
Length Skirt (KA008601_MCB2_f04_04)



Blue, Black, and White Plaid Dress with Full
Skirt (KA008601_MCB2_f05_01)



Plaid Skirt and Matching Shawl with White
Collared Blouse
(KA008601_MCB3_f04_02)



Cable Knit Sweater with Skinny Trousers
(KA008601_MCB3_f04_04)



Oversized Women's Coat with Large
Square Flap Pockets
(KA008601_MCB3_f04_05)



Women's Long Overcoat with Square and
Circular Pockets
(KA008601_MCB4_f02_01)



Women's Polka Dotted Blouse with Pleated
Midi Skirt (KA008601_MCB4_f02_02)



Women's Ensemble with Striped Capri
Pants and Collared Blouse
(KA008601_OSx1_f02_06)



Voluminous Evening Dress with Scooped
Back Neckline
(KA008601_OSxxx1_f06_01)



Long-Sleeved Voluminous Evening Dress
(KA008601_OSxxx1_f06_02)



Voluminous Long-Sleeved Evening Dress with Scooped Back Neckline (KA008601_OSxxx1_f06_03)



Oversized Women's Hat with Bow (KA0038_000082)



Belted Dress with Extra Wide Neckline (KA0038_000029)



Sleeveless Yellow Dress with Small Bows (KA0038_000047)



Women's Coat with Oversized Pockets and Standing Collar (KA008601_MCB1_f06_01)



Women's Tweed Coat with Wide Collar (KA0038_000004)



Bubble Dress and Two-Piece Women's Ensemble (KA008601_MCB1_f07_01)



Women's Ensemble with Pencil Skirt and Loose Buttoned Jacket (KA008601_MCB4_f01_01)



Plaid Women's Ensemble with a Pencil Skirt, Boxy Coat, and Ribbed Turtleneck (KA008601_MCB4_f01_02)



Double-Breasted Fur Coat with Pencil Skirt and Pillbox Hat (KA008601_MCB4_f01_03)



Women's Ensemble with Pencil Skirt and Buttoned Top (KA008601_MCB4_f01_04)



Women's Ski Ensemble with Polka-Dotted Parka and Striped Trousers (KA008601_MCB3_f06_01)



Women's Ski Ensemble with V-Necked Poplin Parka (KA008601_MCB3_f06_02)



Women's Sleeveless Ski Suit with Striped Top and Belt Satchel (KA008601_MCB3_f06_03)



Wedding Dress with Voluminous Skirt and Lace Top (KA008601_MCB2_f02_02)



Wedding Dress with Buttoned Bodice and Embroidered Skirt (KA008601_MCB2_f02_03)



Women's Two-Piece Bathing Suit with "Coolie" Hat (KA008601_MCB2_f01_01)



Waist-Length Fur Jacket with Wide Collar (KA002201_OSxxx1_f03_01)



Women's Printed Pajama Suit with Tiered Tassel Earrings (KA002201_OSxxx1_f03_02)



Back View of Nude Woman (KA002201_OSxxx1_f03_05)



Man and Woman in Evening Wear (KA002201_OSxxx1_f03_08)



Wedding Party and Guests Featuring Bride in Patterned Dress with Wattleau Train (KA002201_OSxxx1_f03_09)



Woman on Ship Deck Wearing Short Sheath Dress with Cut-Out Design (KA002201_OSxxx1_f04_01)



Printed Women's Ensemble with Harem Trousers (KA002201_OSxxx1_f10_01)



Floral Printed Bridal Gown with Empire Waistline and Flyaway Veil (KA002201_OSxxx1_f10_02)



Saks Fifth Avenue Sales Associate and Two Women in Fur Coats (KA002201_OSxxx1_f10_03)



High-Waisted Sequined Sheath Dress with Yellow Swing Coat (KA002201_OSxxx1_f11_01)



Lime Green Dress and White Mushroom Hat with Multicolor Flowers (KA002201_OSxxx1_f11_02)



Orange Women's Ensemble Featuring Bellbottom Pants (KA002201_OSxxx1_f11_04)



Fur Swing Coat with Oversized Collar (KA002201_OSxxx1_f12_01)



Brown Double-Breasted Herringbone Coat and Mushroom Hat (KA002201_kOSxxx7_f01_01)



Two Women in Casual Ensembles and Capulet Hats (KA002201_OSxx3_f10_03)



Voluminous Circle Skirt with Lace Border and Petticoat (KA008601_OSxx2_f06_01)



Talmack Design Room (KA008601_MCB4_f04_01)



Women's Printed Ensemble with Wrap Skirt, Bikini Top, and Bolero Jacket (KA002201_OSxxx1_f04_08)



Flowing Evening Dress with Wrapped Bodice (KA002201_OSxxx1_f04_09)



Three Women in Various Fur Coats
(KA002201_OSxx3_f10_01)



Asymmetrical Evening Dress with Oversized Bow
(KA002201_OSxx3_f10_02)



Woman in Long Coat with Saks Fifth Avenue Shopping Bag
(KA002201_OSxx3_f10_04)



Women's Ensemble Featuring Knee-High Boots and Zebra Striped Coat with Hood
(KA002201_OSxx3_f10_05)



Wrap Dress with All-Over Geometric Print
(KA002201_OSxx3_f10_06)



Women's Ensemble Featuring Balloon Pants, Cartwheel Hat, and Top with Funnel Neckline
(KA002201_OSxxx1_f01_02)



Sleeveless Pleated Dress with Long Tiered Skirt
(KA002201_OSxxx1_f01_03)



Woman with Long Hair Wearing Fitted Jacket with Oversized Ruffle Collar and Peplum Waist



Woman with Short Hair Wearing Fitted Jacket with Oversized Ruffle Collar and Peplum Waist



Sweater, Boots, Socks, and Purse with Assorted Ski Equipment
(KA002201_OSxxx1_f04_03)



Man and Woman Lounging in Casual Ensembles
(KA002201_OSxxx1_f01_01)



Woman Lounging in Floral Printed Dress with Puff Sleeves
(KA002201_OSxxx1_f04_02)



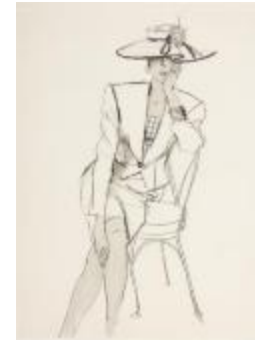
Man and Two Women Wearing Cowboy Inspired Ensembles (KA002201_OSxxx1_f04_05)



Lord & Taylor Advertisement Featuring Garnet Wool Ensemble by Geoffrey Beene (KA002201_OSxxx1_f02_01)



Lord & Taylor Advertisement Featuring Woven Bag by Judith Leiber (KA002201_OSxxx1_f12_02)



Women's Suit with Collarless Jacket, Pencil Skirt, and Plaid Blouse (KA002201_OSxxx1_f01_05)



Women's Ensemble Featuring Duster Jacket and Pencil Skirt (KA002201_OSxxx1_f04_04)



Long Color-Blocked Cardigan with Pleated Skirt (KA002201_OSxxx1_f04_06)



Women's Ensemble Featuring Pleated Plaid Skirt and Sweater (KA002201_OSxxx1_f04_07)



Plaid Women's Ensemble Featuring Blanket Cape (KA002201_OSxxx1_f04_10)



Striped Dress with Full Skirt (KA002201_OSxxx1_f04_11)



Women's Ensemble Featuring Peasant Blouse and Midi-Length Skirt (KA002201_OSxxx1_f04_13)



Women's Ensemble with Coat, Sweater Vest, and Plaid Skirt (KA002201_OSxxx1_f05_04)



Women's Floral Printed Blazer and Stirrup Pants (KA002201_OSxxx1_f06_05)



Women's Ensemble Featuring Collared Top and Narrow Skirt with Horse Race Motifs (KA002201_OSxxx1_f07_10)



One-Sleeved Evening Dress with High Skirt Slit (KA002201_OSxxx1_f07_11)



Women's Ensemble Featuring Pullover and Pants (KA002201_OSxxx1_f09_02)



Women's Brown Plaid Suit with Tan Collared Shirt (KA002201_OSxxx1_f11_03)



Schoolgirl Dress with Exaggerated Drop Waist and Oversized Collar (KA002201_OSxxx1_f04_12)