



Women's Glove (KA0067_000001)



Assortment of Women's Gloves with Seamed Fingers (KA0067_000002)



Wrist-Length Women's Gloves (KA0067_000003)



Corduroy Gloves with Crocheted Seams (KA0067_000004)



Assortment of Women's Gloves (KA0067_000005)



Evening Dress with Fringed Sash Belt (KA0067_000027)



Costume Designs for Adaptation of Lysistrata (KA0067_000362-381)



Evening Dress with Shirred Bodice and Short Sleeves (KA0067_000006)



Calf-Length Wrap Coat with Self Belt (KA0067_000007)



One-Sleeved, Polka-Dotted Evening Dress (KA0067_000008)



Asymmetrical Dress with Long and Short Sleeves (KA0067_000009)



Golden Yellow Chiffon Evening Dress with Metal Cloth Jacket (KA0067_000010)



Jade Green Dress with Tucks and Long Bell Sleeves (KA0067_000011)



Evening Dress with Flesh Colored Top and Copper Skirt (KA0067_000012)



Multicolor Satin Evening Dress with Flared Skirt (KA0067_000013)



Green Satin Evening Dress with Sea Shells (KA0067_000014)



Paneled Evening Dress with Off-the-Shoulder Collar (KA0067_000015)



Evening Dress with Tunic and Pleated Skirt (KA0067_000016)



Calf-Length Wrap Coat or Dress (KA0067_000017)



Floor-Length Evening Dress with Hanging Panels (KA0067_000018)



Box-Pleated Evening Dress with Belted Waist (KA0067_000019)



Black and Blue Taffeta Evening Dress with Large Bows (KA0067_000020)



Evening Dress with Tiered and Ruffled Skirt (KA0067_000021)



Calf-Length Evening Dress with Separate Collar and Sash Belt (KA0067_000022)



Calf-Length Women's Coat with Shawl Collar (KA0067_000023)



Women's Ensemble with Stitched Accents (KA0067_000024)



Long-Sleeved Dress with Bows (KA0067_000025)



Women's Evening Ensemble with Double-Breasted Jacket (KA0067_000026)



Evening Dress with Belted Waist and Box Pleats (KA0067_000028)



Sleeveless Evening Dress with Ribbon and Geometric Design (KA0067_000029)



Sleeveless Evening Dress with Shirred Drop-Waist Skirt (KA0067_000030)



Short-Sleeved Dress with Wide Box Pleats (KA0067_000031)



Lace Evening Dress with Petal Peplum (KA0067_000032)



Long-Sleeved Pattern Dress with Wide Loops (KA0067_000033)



Evening Coat with Batwing Sleeves (KA0067_000034)



Costume Design for Player King (KA0067_b02_f09_01)



Thin Wool Street Coat with Inset Tucking
(KA0067_b03_f08_07)



Long-Sleeved Purple Evening Dress
(KA0067_000040)



Red Evening Dress with Grey Border
(KA0067_000041)



Floor-Length Wrap Dress with Floral
Pattern (KA0067_000042)



Green Satin Wrap Dress with Red Lining
(KA0067_000043)



Light Green Ruched Evening Dress with
Mermaid Silhouette (KA0067_000044)



Pleated Grey Coat with Wide Sleeves
(KA0067_000045)



Black Evening Dress with Bow Ties
(KA0067_000046)



Black Striped Wrap Dress or Coat
(KA0067_000047)



Floor-Length Evening Dress with Ruffle
Collar and Blue Lining (KA0067_000048)



Floor-Length Evening Dress with Green
Lining (KA0067_000049)



Long-Sleeved Dress with Pleated Panel
(KA0067_000050)



Long-Sleeved Pleated Dress
(KA0067_000051)



Tunic Top with Standing Collar and Puffed
Sleeves (KA0067_000052)



Long-Sleeved Dress with Open Back
(KA0067_000053)



Floor-Length Evening Dress with Flared
Skirt (KA0067_000054)



Long-Sleeved Dress with Drawstring
Neckline (KA0067_000055)



Floor-Length Dress with Sleeve
Embellishments (KA0067_000056)



Floor-Length Dress with Bow Collar in Back
(KA0067_000057)



Long-Sleeved Dress with Cowl Neckline
and Shoulder Embellishments
(KA0067_000058)



Floor-Length Dress with Short Bell Sleeves
(KA0067_000059)



Ankle-Length Wrap Coat with Tiered
Bodice (KA0067_000060)



Ankle-Length Coat with Wing Collar and
Small Dome Buttons (KA0067_000061)



Women's Suit with Ruffle Jabot Collar
(KA0067_000062)



Long-Sleeved Dress with Small Dome Buttons (KA0067_000063)



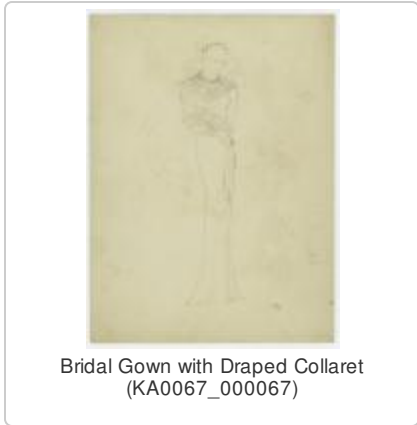
Long-Sleeved Dresses with Pleated Panels (KA0067_000064)



Off-the-Shoulder Bridal Gown with Paneled Skirt (KA0067_000065)



Bridal Gown with Knife-Pleated Ruffle Neckline (KA0067_000066)



Bridal Gown with Draped Collaret (KA0067_000067)



Long-Sleeved Bridal Gown with Cowl Neckline (KA0067_000068)



Box Coat with Stripes (KA0067_000069)



Tiered Capelets (KA0067_000070)



Floor-Length Dress with Short Bat Sleeves (KA0067_000071)



Thin Wool Street Coat with Tucks and Pleats (KA0067_000072)



Thin Wool Street Coat with Inset Tucking (KA0067_000073)



Calf-Length Coat with Wide Flat Collar and Piping (KA0067_000074)



Calf-Length Coat with Wide Flat Collar and Pointed Yoke (KA0067_000075)



Light Wool Coat with Narrow Trim (KA0067_000076)



Natural Linen Coat with Strip and Button Embellishments (KA0067_000077)



Calf-Length Coat with Shawl Collar (KA0067_000078)



Knee-Length Coat with Notched Collar and Pleated Flap Pockets (KA0067_000079)



Sheer Coat or Dress with Tucks and Pleats (KA0067_000080)



Short-Sleeved Wrap Coat with Decorative Trim (KA0067_000081)



Calf-Length Coat with Small Dome Buttons (KA0067_000082)



Triple Chiffon Negligée with Tiered Bodice (KA0067_000083)



Strapless Evening Dress with Shaped Tucks (KA0067_000084)



Floor-Length Evening Dress with Tunic Coat (KA0067_000085)



Capelet with Scalloped Yoke and Inverted Pleats (KA0067_000086)



Women's Ensemble with Tunic Coat
(KA0067_000087)



Women's Ensemble with Tunic Jacket and
Ascot Scarf (KA0067_000088)



Floor-Length Pleated Dress
(KA0067_000089)



Dress or Short-Sleeved Housecoat with
Frog Embellishments (KA0067_000090)



Black Moire Women's Suit with Pleated
Panels (KA0067_000091)



Long-Sleeved Blue Dress with Black Trim
(KA0067_000092)



Long-Sleeved Bridal Gown with Green Trim
(KA0067_000093)



Women's Evening Ensemble with Lace
Tunic Jacket (KA0067_000094)



Calf-Length Coat with Bands of Tucking
(KA0067_000095)



Women's Ensemble of Ribbed Fabric
(KA0067_000096)



Floor-Length Evening Dress with Draped
Bodice (KA0067_000097)



Calf-Length Coat with Rolled Collar and
Bands of Tucking (KA0067_000098)



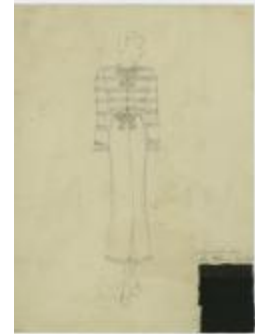
Patterned Wrap Coat with Wide Sleeves
(KA0067_000099)



Ankle-Length Wrap Coat with Bell Sleeves
(KA0067_000100)



Women's Ensemble with Panels of Tucking
or Ribbed Fabric (KA0067_000101)



Women's Ensemble with Bands of Tiered
Fabric (KA0067_000102)



Three-Piece Women's Ensemble with
Stripes or Tiers (KA0067_000103)



Navy Blue Coat or Dress with Bands of
Ribbed Fabric (KA0067_000104)



Long-Sleeved Dress with Bands of Tiered
Fabric (KA0067_000105)



Women's Ensemble with Tiered Bands and
Fur Shawl (KA0067_000106)



Floor-Length Evening Dress with Open
Back (KA0067_000107)



Women's Ensemble with Wrist-Length
Cape (KA0067_000108)



Evening Dress with Open Back and
Inverted Pleats (KA0067_000109)



Floor-Length Evening Wrap Dress
(KA0067_000110)



Evening Dress with Lace Tunic
(KA0067_000111)



Long-Sleeved Bridal Gown with Cowl
Neckline (KA0067_000112)



Bridal Gown with Long-Sleeved Tunic
(KA0067_000113)



Wrap Coat or Robe with Rabbit Ear Bows
(KA0067_000114)



Housecoat or Robe with Sash Belt
(KA0067_000115)



Long-Sleeved Dress or Nightgown
(KA0067_000116)



Loose Dress or Nightgown with Drawstring
Neckline (KA0067_000117)



Evening Dress with Full Skirt and Plunging
Neckline (KA0067_000118)



Buttoned Housecoat with Wide Belt
(KA0067_000119)



Short-Sleeved Dress with Small Buttons
(KA0067_000120)



Short-Sleeved Dress with Bands of Striped
or Ribbed Fabric (KA0067_000121)



Calf-Length Shirtdress with Narrow Trim
(KA0067_000122)



Short-Sleeved Dress with Striped or Ribbed Bands (KA0067_000123)



Calf-Length Dress with Pleats and Tucks (KA0067_000124)



Women's Ensemble with Loose Striped Jacket (KA0067_000125)



Flared Coat with Diamond Shaped Buttons (KA0067_000126)



Princess Coat with Narrow Trim and Wide Pointed Collar (KA0067_000127)



Women's Suit with Narrow Trim and Ascot Scarf (KA0067_000128)



Women's Suit with Narrow Trim and Bound Buttonholes (KA0067_000129)



Women's Suit with Flap Closures (KA0067_000130)



Women's Suit with Vertical Bands of Striped or Ribbed Fabric (KA0067_000131)



Women's Three-Piece Suit with Narrow Trim (KA0067_000132)



Women's Suit with Double Collar (KA0067_000133)



Women's Suit with Wide Pointed Collar (KA0067_000134)



Women's Suit with Collarless Jacket
(KA0067_000135)



Short-Sleeved Dress with Bow Collar and
Decorative Bands (KA0067_000136)



Women's Suit with Small Buttons and
Narrow Trim (KA0067_000137)



Short-Sleeved Dress with Piping or Narrow
Trim (KA0067_000138)



Women's Suit with Collarless Jacket and
Calf-Length Skirt (KA0067_000139)



Women's Suit with Vertical Piping or Narrow
Trim (KA0067_000140)



Women's Suit with Small Collar and Arrow
Details (KA0067_000141)



Women's Suit with Wide Pointed Collar and
Arrow Details (KA0067_000142)



Women's Suit with Gored Skirt and
Collarless Jacket (KA0067_000143)



Calf-Length Princess Coat with Frogging
(KA0067_000144)



Wrap Coat with Decorative Trim
(KA0067_000145)



Wrap Dress with Wide Striped Border
(KA0067_000146)



Women's Ensemble with Small Strips and Gathered Skirt (KA0067_000147)



Pleated Dress or Coat (KA0067_000148)



Long-Sleeved Dress with Pleats and Tucks (KA0067_000149)



Long-Sleeved Green Dress or Jumpsuit (KA0067_000150)



Full-Length Coat with Buttoned Strips (KA0067_000151)



Short-Sleeved Shirtdress with Tucks and Inverted Pleats (KA0067_000152)



Women's Suit with Buttoned Strips (KA0067_000153)



Women's Wrap Coat with Round Closures (KA0067_000154)



Short-Sleeved Shirtdress with Narrow Trim (KA0067_000155)



Floor-Length Evening Coat or Housecoat (KA0067_000156)



Calf-Length Women's Coat with Draped Panels (KA0067_000157)



Floor-Length Dress with Short Sleeves and Striped Bands (KA0067_000158)



Flared Dress or Coat with Narrow Trim
(KA0067_000159)



Gored Dress with Topstitching
(KA0067_000160)



Princess Style Coat with Pleated Front
(KA0067_000161)



Calf-Length Dress with Stitched Accents
(KA0067_000162)



Short-Sleeved Dress with Vertical Seams
(KA0067_000163)



Long-Sleeved Shirtdress with Contrast Collar and Cuffs
(KA0067_000164)



Short-Sleeved Evening Dress with Striped Hem
(KA0067_000165)



Women's Suit with Small Welt Pockets
(KA0067_000166)



Pleated Dress with Arrow Details
(KA0067_000167)



Women's Suit with Small Buttons and Arrow Accents
(KA0067_000168)



Calf-Length Princess Coat
(KA0067_000169)



Flared Coat or Dress with Panels
(KA0067_000170)



Shirtdress with Inverted Pleats
(KA0067_000171)



Small Brimmed Hats with Ribbons and
Braids (KA0067_000172)



Bumper or Breton Style Hats
(KA0067_000173)



Floor-Length Housecoat with Ribbed
Panels (KA0067_000174)



Short-Sleeved Dress with Bow Collar and
Pleats (KA0067_000175)



Short-Sleeved Shirtdress with Tied Waist
(KA0067_000176)



Women's Tunic Ensemble with Polka-
Dotted Bows (KA0067_000177)



Calf-Length Polka-Dotted Dress with Bows
(KA0067_000178)



Pleated Evening Dress with Leaf
Embellishment (KA0067_000179)



Draped Evening Dress with String or Ropes
(KA0067_000180)



Draped Evening Dress with Twisted Rope
(KA0067_000181)



Evening Dress with Pleated Panel and
Leaf Embellishment (KA0067_000182)



Himation Style Evening Dress
(KA0067_000183)



Himation Style Pleated Evening Dress
(KA0067_000184)



Shirred Evening Dress with Wrapped
Bodice (KA0067_000185)



Evening Dress with Long Draped Panel
and Embellished Belt (KA0067_000186)



Embellished Coat with Wide Sleeves
(KA0067_000187)



Women's Coat with Notched Sailor Collar
(KA0067_000188)



Women's Ensemble with Swing Cape
(KA0067_000189)



Pleated Evening Dress with Surplice
Bodice (KA0067_000190)



Doric Chiton Style Evening Dress with
Girdle (KA0067_000191)



Floor-Length Wrap Dress with Short
Kimono Sleeves (KA0067_000192)



Pleated Wrap Dress with Short Kimono
Sleeves (KA0067_000193)



Ionic Chiton Style Evening Dress
(KA0067_000194)



Pleated Evening Dress with Peplum
(KA0067_000195)



A-Line Jumper with Buttoned Waist
(KA0067_000196)



Short-Sleeved Wrap Dress with Striped
Bands (KA0067_000197)



Short-Sleeved Dress with Bands of Tucks
and Pleats (KA0067_000198)



Calf-Length Dress with Triangular Panels of
Tucks (KA0067_000199)



Women's Ensemble with Tucks and Rope
Trim (KA0067_000200)



Women's Caps (KA0067_000201)



Historical Style Women's Hats
(KA0067_000202)



Long-Sleeved Dress with Crossed Bands
and Zig Zag Trim (KA0067_000217)



Letter from Michael Strange Regarding
Joan of Arc Production
(KA0067_b02_f08_01)



Costume Design for Joan of Arc
(KA0067_b02_f08_02)



Long-Sleeved Dress with Buttoned Bodice
and Gathered Skirt (KA0067_000203)



Purple and Pink Evening Dress with Twisted Tiers (KA0067_000204)



Striped Dress with Surplice Bodice and Kimono Sleeves (KA0067_000205)



Evening Dress with Knotted Bodice and Long Open Sleeves (KA0067_000206)



Sleeveless Evening Dress with Pleated Panels (KA0067_000207)



Evening Dress with Long Hanging Sleeves (KA0067_000208)



Sleeveless Evening Dress with Decorative Band (KA0067_000209)



Floor-Length Evening Dress with Narrow Trim and Sweetheart Neckline (KA0067_000210)



Long-Sleeved Evening Dress or Coat with Embellished Bodice (KA0067_000211)



Long-Sleeved Dress with Split Neckline and Embellished Waistband (KA0067_000212)



Long-Sleeved Dress with Tucks and Pleats (KA0067_000213)



Women's Ensemble with Bolero Jacket (KA0067_000214)



Long-Sleeved Dress with Ribbed Bands and Dots (KA0067_000215)



Long-Sleeved Dress with Scalloped Edges and Diamond Shaped Trim (KA0067_000216)



Long-Sleeved Dress with Embellished Waistline (KA0067_000218)



Long-Sleeved Dress with Gathered Bodice and Narrow Trim (KA0067_000219)



Long-Sleeved Shirtdress with Surplice Bodice (KA0067_000220)



Medieval Inspired Bridal Gown or Costume with Veiled Torque (KA0067_000221)



Medieval Inspired Dress with Conical Hennin (KA0067_000222)



Medieval Inspired Bridal Gown or Costume with Split Sleeves (KA0067_000223)



Medieval Inspired Dress with Patterned Trim and Heart Shaped Hennin (KA0067_000224)



Medieval Inspired Dress with Patterned Sleeves and Torque (KA0067_000225)



Medieval Inspired Dress with Juliet Cap and Paneled Sleeves (KA0067_000226)



Medieval Inspired Wedding Gown or Costume with Juliet Sleeves (KA0067_000227)



Medieval Inspired Dress of Patterned Fabric with Heart Shaped Hennin (KA0067_000228)



Short-Sleeved Dress with Pointed Collar and Small Buttons (KA0067_000229)



Day Dress with Sailor Collar and Striped or Ribbed Panels (KA0067_000230)



Shirred Crepe Evening Dress with Satin Bands (KA0067_000231)



Long-Sleeved Day Dress with Sailor Collar (KA0067_000232)



Day Dress with Small Collar and Vine Trim (KA0067_000233)



Women's Ensemble with Wide Pointed Collar (KA0067_000234)



Short-Sleeved Dress with Small Buttons and Striped or Ribbed Bands (KA0067_000235)



Loose Evening Dress with Tucking (KA0067_000236)



Sleeveless Evening Dress with Decorative Band and Surplice Bodice (KA0067_000237)



Draped Evening Dress with Leaf Belt (KA0067_000238)



Pleated Evening Dress with Wrapped Bodice (KA0067_000239)



Pleated Evening Dress with Toga Wrap (KA0067_000240)



Sleeveless Evening Dress with Wide Ribbon (KA0067_000241)



Printed Evening Dress with Wide Ribbon (KA0067_000242)



Evening Dress with Bows and Box Tucks (KA0067_000243)



Sleeveless Evening Dress with Separated Torso (KA0067_000244)



Striped Women's Suit with Topstitching (KA0067_000245)



Evening Dress with Separated Torso (KA0067_000246)



Striped Evening Dress with Short Puffed Sleeves (KA0067_000247)



Evening Dress with Shirred Bodice and Sleeves (KA0067_000248)



Sleeveless Evening Dress with Shirred and Pleated Panels (KA0067_000249)



Navy Linen Evening Dress with Pleated Skirt Tier (KA0067_000250)



Striped Evening Dress with Very Full Skirt (KA0067_000251)



Floor-Length Evening Dress with Long Fins (KA0067_000252)



Red Striped Evening Dress
(KA0067_000253)



Long-Sleeved "Handkerchief" Dress
(KA0067_000254)



Long-Sleeved Dress with Tucked Panels
(KA0067_000255)



Women's Ensemble with Collarless Jacket
and High Cossack Hat (KA0067_000256)



Women's Ensemble with Tall Cossack Hat
(KA0067_000257)



Skirt and Jacket with Folded Tails
(KA0067_000258)



Women's Ensemble with Pleated Skirt and
Cutaway Coat (KA0067_000259)



Women's Ensemble with Lace Blouse and
Cutaway Coat (KA0067_000260)



Women's Suit with Small Strip
Embellishments (KA0067_000261)



Women's Ensemble with Pleated Gilet
(KA0067_000262)



Women's Ensemble with Pleated Gilet and
Flap Closures (KA0067_000263)



Women's Ensemble with Ruffled Collar
(KA0067_000264)



Women's Ensemble with Floor-Length Coat (KA0067_000265)



Long-Sleeved Dress with Rows of Unknown Embellishments (KA0067_000266)



Toque and Floral Hats (KA0067_000267)



Striped Evening Dress with Full Skirt (KA0067_000268)



Skirt and Cutaway Jacket with Folded Tails (KA0067_000269)



Women's Ensemble with Collarless Cutaway Coat (KA0067_000270)



Women's Ensemble with Bows and Pleated Panels (KA0067_000271)



Long Blouse with Drawstring Skirt (KA0067_000272)



Long-Sleeved Dress with Small Buttons and Hidden Pockets (KA0067_000273)



Long-Sleeved Dress with Multiple Plackets (KA0067_000274)



Long-Sleeved Dress with Decorative Bands and Small Buttons (KA0067_000275)



Long-Sleeved Dress with Shirred Yoke and Skirt Panel (KA0067_000276)



Long-Sleeved Dress with Zigzag Trim
(KA0067_000277)



Short-Sleeved Dress with Tucked Panels
(KA0067_000278)



Short-Sleeved Dress with Draped Skirt and
Gathered Bodice (KA0067_000279)



Short-Sleeved Evening Dress with Tiered
Skirt (KA0067_000280)



Floor-Length Dress with Long Contrasting
Fins (KA0067_000281)



Evening Coat with Full Skirt
(KA0067_000282)



Floor-Length Dress with Shirred Skirt and
Plunging V-Neckline (KA0067_000283)



Evening Dress with Draped Skirt and
Embellished Bodice (KA0067_000284)



Long-Sleeved Dress with Ruffled Collar
(KA0067_000285)



Women's Suit with Wide Ruffled Collar
(KA0067_000286)



Women's Suit with Wide Pointed Collar
(KA0067_000287)



Evening Dress with Decorative Trim
(KA0067_000288)



Evening Dress with Diamond Shaped Pattern (KA0067_000289)



Evening Dress with Full Skirt and Decorative Trim (KA0067_000290)



Women's Evening Ensemble with Draped Collar (KA0067_000291)



Women's Evening Ensemble with Wide Stripes and Sleeve Cuffs (KA0067_000292)



Women's Evening Ensemble with Full Skirt and Ruffled Peplum Jacket (KA0067_000293)



Evening Dress with Buttoned Waist and Oversized Bow (KA0067_000294)



Long-Sleeved Evening Dress with Contrasting Stripe and Waistband (KA0067_000295)



Women's Evening Ensemble with Full Skirt and Peplum Jacket (KA0067_000296)



Women's Evening Ensemble with Full Skirt and Decorative Bands (KA0067_000297)



Evening Dress with Full Skirt and Short Sleeves (KA0067_000298)



Women's Evening Ensemble with Bolero Jacket and Large Bow (KA0067_000299)



Women's Evening Ensemble with Fitted Jacket and Wide Stripes (KA0067_000300)



Black Evening Dress with Red, Green, and Blue Stripes (KA0067_000301)



Floor-Length Evening Dress with Full Skirt and Stripes (KA0067_000302)



Evening Dress with Full Skirt and Decorative Bands (KA0067_000303)



Evening Dress with Open Skirt and Cartridge Embellishments (KA0067_000304)



Evening Dress with Buttoned Bodice and Opened Skirt (KA0067_000305)



Evening Dress with Buttoned Bodice and Narrow Trim (KA0067_000306)



Evening Dress with Narrow Trim and Layered Skirt (KA0067_000307)



Evening Dress with Full Skirt and Bands of Tucks or Pleats (KA0067_000308)



Evening Dress with Full Skirt and Wide Ribbons (KA0067_000309)



Evening Dress with Small Bows and Bands of Stripes or Tucks (KA0067_000310)



Evening Dress with Wide Ribbon Bows (KA0067_000311)



Evening Dress with Pleated Panel and Bands of Tucks (KA0067_000312)



Women's Evening Ensemble with Bolero Jacket and Bows (KA0067_000313)



Women's Evening Coat with Full Skirt and Pleated Pockets (KA0067_000314)



Women's Evening Coat with Decorative Trim (KA0067_000315)



Women's Evening Coat with Full Skirt and Decorative Trim (KA0067_000316)



Women's Evening Ensemble with Lace and Long Pink Gloves (KA0067_000317)



Sleeveless Evening Dress with Full Lace Skirt (KA0067_000318)



Lace Evening Dress with Heavy Braid or Cord (KA0067_000319)



Striped Evening Dress with Full Skirt and Wide Neckline (KA0067_000320)



Long-Sleeved Dress with Ruffled Collar and Cuffs (KA0067_000321)



Midi-Length Shirtdress with Ruffled Edges (KA0067_000322)



Long-Sleeved Wrap Dress with Wide Ruffled Collar (KA0067_000323)



Collared Dress with Small Buttons and Ruffled Edges (KA0067_000324)



Short-Sleeved Dress with Draped Panels (KA0067_000325)



Long-Sleeved Dress with Leaf Pattern (KA0067_000326)



Dress with Drawstring Pockets and Keyhole Neckline (KA0067_000327)



Evening Dress with Pleated, Striped, or Shirred Panels (KA0067_000328)



Long-Sleeved Evening Dress with Flounced Skirt (KA0067_000329)



Skirt with Layer of Pleating (KA0067_000330)



Pleated Evening Dress with Buttoned Tunic Layer (KA0067_000331)



Evening Dress with Full Skirt and Rows of Pleats or Tucks (KA0067_000332)



Women's Lace Evening Ensemble with Bolero Jacket (KA0067_000333)



Short-Sleeved Lace Evening Dress (KA0067_000334)



Double Net Evening Dress with Wide Neckline (KA0067_000335)



Women's Evening Ensemble with Collared Bolero Jacket (KA0067_000336)



Women's Evening Ensemble with Lace Bolero Jacket (KA0067_000337)



Women's Lace Evening Ensemble with Long Pink Gloves (KA0067_000338)



Long-Sleeved Evening Dress with Lace (KA0067_000339)



Long-Sleeved Evening Dress with Yoke (KA0067_000340)



Evening Dress with Wrapped Bodice and Embellished Shoulders (KA0067_000341)



Floor-Length Dress with Shirred Yoke (KA0067_000342)



Evening Dress with Floor-Length Peplum Skirt (KA0067_000343)



Evening Dress with Tiered Tunic and Embellished Bodice (KA0067_000344)



Tiered Evening Dress with Short Embellished Sleeves (KA0067_000345)



Women's Evening Ensemble with Tiered Skirt (KA0067_000346)



Asian and Polynesian Inspired Ensembles (KA0067_000347)



Printed Tunic Ensembles or Pajamas (KA0067_000348)



Printed Pajamas with Short-Sleeved Bolero Top (KA0067_000349)



Women's Lounge Ensemble with Checked Jacket (KA0067_000350)



Floor-Length Dress with Cropped Jacket (KA0067_000351)



Floor-Length Dress with Wide Shawl (KA0067_000352)



Floor-Length Dress with Obi Belt and Short Kimono Sleeves (KA0067_000353)



Ensemble with Pajama Pants or Long Skirt (KA0067_000354)



Short-Sleeved Printed Dress with Surplice Bodice (KA0067_000355)



Women's Ensemble with Wide-Legged Checked Pants (KA0067_000356)



Pleated Evening Dress with Solid Panels (KA0067_000357)



Floor-Length Pleated Dress with "Coolie" Coat (KA0067_000358)



Evening Dress with Full Skirt and Striped Panels (KA0067_000359)



Evening Dress with Decorative Trim (KA0067_000360)



Long-Sleeved Dress with Decorative Bands
(KA0067_000361)



Human Figures for the 1939 World's Fair
Futurama Exhibit (KA0067_b02_f13_03)



Women's Ballet Flats and Assorted Booties
(KA0067_000039)



Women's Sandals, Flats, and Waterproof
Shoes (KA0067_000035)



Assortment of Laced and Buttoned
Women's Shoes (KA0067_000036)



Assortment of Laced Women's Shoes
(KA0067_000037)



Assortment of Women's Sandals and
Pointed Shoes (KA0067_000038)



Women's Ensemble with Tights, Tunic, and
Leather Pouches (KA0067_b02_f03_02)



"Now Again: Shocking Pink"
(KA008601_OSx1_f13_07)



Mildred Orrick Sketching Dress Design for
Townley Frocks (KA0067_b04_f24_01)



Mildred Orrick Draping Fabric for Townley
Frocks (KA0067_b04_f24_02)