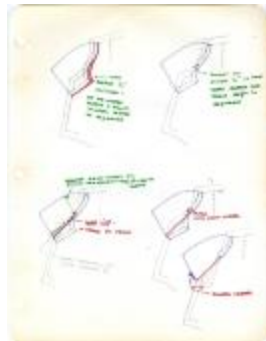


Front and Back Bodice Slopers (KA0008_b03_f05_05a)



Front and Back Bodice Slopers, Pattern Pieces (KA0008_b03_f05_05v)



Full Flair Skirt (KA0008_b03_f05_03a)



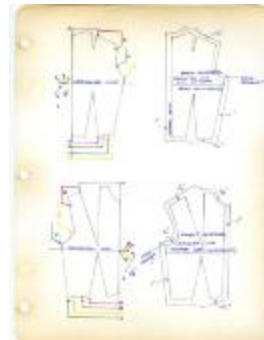
Full Flair Skirt Instructions (KA0008_b03_f05_03v)



Batwing Sleeve (KA0008_b03_f05_04a)



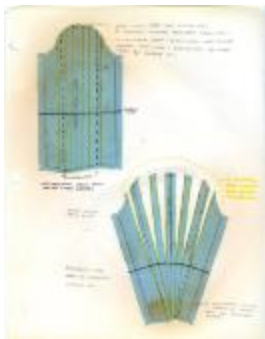
Batwing Sleeve Instructions (KA0008_b03_f05_04v)



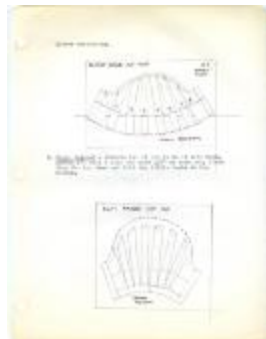
Gusset Kimono (KA0008_b03_f04_01)



Gusset Kimono (KA0008_b03_f04_02)



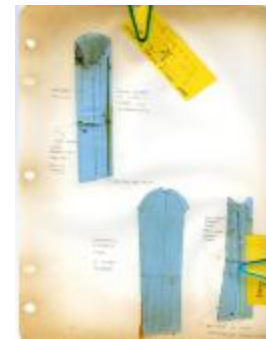
Leg-o-mutton Style # 1 (KA0008_b03_f05_06)



Sleeve Variations (KA0008_b03_f06_07a)



Sleeve Variations (KA0008_b03_f06_07v)



Two-piece Sleeve (KA0008_b03_f06_08)



Junior's Ensemble with Pink Flannel Jacket and Wool Knit Sweater (PIC02002-1_b25_f01_01)



Pleated White Evening Dress with Wool Melton Cape (PIC02002-1_b25_f01_02)



Two-Piece White Jersey Dress with Camel's Hair Coat (PIC02002-1_b25_f01_03)



Paris (KA0008_000001)