



Loose Red Dress with Gold Jewelry (KA002201_OSxxx1_f07_09)



Miron Striped Worsted Dress (KA008601_OSxx1_f11_01)



Woman in Jacket with Two Tailors (KA0038_000128)



**Ruffled Bridal Gown and Containers of "Salut de Schiaparelli"
(KA0038_000077)**



**Long-Sleeved Shirtdress with Matching Neck Scarf
(KA004101_kOSxxx1_f08_02)**



**Women's Suit with Frog Closure Embellishments
(KA004101_kOSxxx1_f09_01)**



Women's Suit with Barrel Handbag and Feathered Hat
(KA004101_kOSxxx1_f10_01)



Women's Suit with Chest Embellishment and Flap Handbag
(KA004101_MCC3_f01_01)



Four Women's Heads (KA004101_kOSxxx1_f08_01)



Women's Suit with Patterned Neck Scarf and Frame Handbag
(KA004101_MCC3_f02_01)



Women's Suit with Tiered Flap Accents (KA004101_MCC3_f03_01)



Women's Ensemble with Short-Sleeved Blouse and Pleated Skirt
(KA004101_MCC3_f04_01)



Women's Ensemble with Pleated Skirt and Cardigan
(KA004101_MCC3_f07_01)



Two-Piece Women's Ensemble and Shirtdress with Full Skirts
(KA004101_MCC3_f01_02)



Maroon Cocoon Top with Wide V-Shaped Neckline and Long Beige Skirt
(KA006401_OSx1_f01_01)



Women's Cocoon Coat with Wide Sleeve Cuffs
(KA006401_OSx1_f01_02)



Black Capri Pants or Skirt with Trapeze Coat and Blue and Green Accessories
(KA006401_OSx1_f01_03)



Women's Cloche Hat and Fur Collar with Poinsettia
(KA006401_OSx1_f01_04)



Voluminous Circle Skirt, Striped Blouse, and Large Embellished Hat
(KA006401_OSx1_f01_05)



Women's Red, Blue, and Yellow Ensemble or Dress
(KA006401_OSx1_f02_02)



Women's Long Blue Belted Coat or Dress (KA006401_OSx1_f02_03)



Women's Ensemble with Cartwheel Hat, Cocoon Top, and Abstract Printed Pencil Skirt (KA006401_OSx1_f02_04)



Women's Ensemble with Collared Shirt, Pink Capri Pants, and Striped Scarf (KA006401_OSx1_f02_05)



Orange Playsuit with Mandarin Collar and Wide "Coolie" Hat
(KA006401_OSx1_f03_01)



Grey Shirtdress with Black Newsboy Cap and Duffle Bag
(KA006401_OSx1_f03_02)



Short-Sleeved Striped Collared Shirt with Voluminous Skirt
(KA006401_OSx1_f03_03)



Princess Coat or Shirtdress with Bowler Hat
(KA006401_OSx1_f03_04)



Women's Collarless Cocoon Coat with Slit Pockets
(KA006401_OSx1_f03_05)



Women's Ensemble with Multicolor Printed Top and Striped Pants
(KA006401_OSx1_f04_01)



Women's Ensemble with Harlequin Printed Top and Voluminous Patterned Skirt
(KA006401_OSx1_f04_02)



Bright Fuchsia Shirtdress (KA006401_OSx1_f05_02)



Orange Playsuit with Ruched Bodice (KA006401_OSx1_f05_03)



Women's Wrap Coat with Shawl Collar (KA008601_MCB1_f06_02)



**Brown Dress with Fitted Bodice and Bubble Skirt
(KA008601_MCB2_f03_02)**



**Yellow Plaid Ensemble with Pleated Skirt and Double-Breasted Jacket
(KA008601_MCB2_f04_01)**



**Women's Ensemble with Pleated Skirt and Double-Breasted Jacket
(KA008601_MCB2_f04_01 overlay)**



Woman's Head with Pillbox Hat (KA008601_MCB2_f04_01v)



**Knee-Length Fitted Dress with Bell Sleeves
(KA008601_MCB2_f04_02)**



**Dress with Short Sleeves and Full Knee-Length Skirt
(KA008601_MCB2_f04_03)**



**Dress with Short Sleeves and Full Knee-Length Skirt
(KA008601_MCB2_f04_04)**



**Blue, Black, and White Plaid Dress with Full Skirt
(KA008601_MCB2_f05_01)**



**Black Dress with Voluminous Skirt and Short Puff Sleeves
(KA008601_MCB2_f05_02)**



Black Dress with Voluminous Skirt and Bow Detail
(KA008601_MCB2_f05_03)



Black Dotted Shirtdress with Fitted Skirt (KA008601_MCB2_f05_04)



Black Striped Dress with Voluminous Skirt and Buttoned Bodice
(KA008601_MCB2_f05_05)



Women's Ensemble Featuring Bermuda Shorts, Collarless Jacket, and Knee-High Socks (KA008601_MCB3_f04_01)



Plaid Skirt and Matching Shawl with White Collared Blouse
(KA008601_MCB3_f04_02)



Women's Ensemble Featuring Bermuda Shorts, Collarless Jacket, and Knee-High Socks (KA008601_MCB3_f04_03)



Cable Knit Sweater with Skinny Trousers (KA008601_MCB3_f04_04)



Oversized Women's Coat with Large Square Flap Pockets (KA008601_MCB3_f04_05)



Women's Long Overcoat with Square and Circular Pockets (KA008601_MCB4_f02_01)



Women's Polka Dotted Blouse with Pleated Midi Skirt (KA008601_MCB4_f02_02)



Women's Ensemble with Short-Sleeved Collared Shirt and Cable Knit Vest (KA008601_MCB4_f03_01)



Nightgown with Ruffled Bib and Short Puffed Sleeves (KA008601_OSx1_f02_01)



Women's Ensemble with Two-Toned Cape (KA008601_OSx1_f02_02)



Women's Herringbone Suit with Bucket Bag (KA008601_OSx1_f02_03)



Women's Ensemble with Cape-Collared Top (KA008601_OSx1_f02_04)



Women's Long Hooded Overcoat with Oversized Square Pockets (KA008601_OSx1_f02_05)



Women's Ensemble with Striped Capri Pants and Collared Blouse (KA008601_OSx1_f02_06)



Voluminous Evening Dress with Scooped Back Neckline (KA008601_OSxxx1_f06_01)



Long-Sleeved Voluminous Evening Dress
(KA008601_OSxxx1_f06_02)



Voluminous Long-Sleeved Evening Dress with Scooped Back Neckline
(KA008601_OSxxx1_f06_03)



Women's Ensemble with Elbow-Length Collared Cape
(KA008601_OSxxx2_f03_01)



Fitted Blue Women's Suit (KA0038_000115)



Yellow Sheath Dress with Orange Hat and Basket Purse
(KA0038_000116)



Belted Women's Coat with Dark Collar (KA0038_000117)



**Women's Ensemble with Black Pants and Short-Sleeved Red Blouse
(KA0038_000120)**



Scoop-Necked Dress with Embellished Hat (KA0038_000123)



Women's Ensemble with Loose Coat (KA0038_000131)



**Women's Ensemble with Fitted Jacket and Wide-Brimmed Hat
(KA0038_000079)**



Women's Yellow Wrap Coat with Shawl Collar (KA0038_000080)



Oversized Women's Hat with Bow (KA0038_000082)



Fitted Skirts with Red or Orange Pumps (KA0038_000083)



Women's Red Plaid Ensemble and Solid Blue Ensemble (KA0038_000089)



Portrait of Unknown Woman (KA0038_000091)



Women's Ensemble with Fitted Jacket and Tall Hat (KA0038_000095)



Portrait of Unknown Woman in Full Evening Dress and Drop Necklace (KA0038_000097)



Orange and Black Plaid Jacket with Black Velveteen Skirt (KA0038_000101)



Women's Trench Coat with Wide Notched Collar (KA0038_000102)



Women's Ensemble with Short Loose Coat and Long Fitted Skirt (KA0038_000112)



Fur Cape, Grey Dress, and Veiled Headpiece (KA0038_000110)



Women's Coat with Oversized Pockets and Standing Collar (KA008601_MCB1_f06_01)



Short Dress with Fichu Wrap and Spotted Cap (KA0038_000086)



Women's Cardigan Jacket and Beret (KA0038_000119)



Cutaway Jacket with Fur Collar (KA0038_000094)



Women's Fitted Jacket and Quilled Hat (KA0038_000098)



Women's Fitted Jacket and Quilled Hat (KA0038_000105)



Women's Loose Overcoat with Small Buttons and Fur Muff (KA0038_000107)



Women's Ensemble Featuring Coat with Flap Closure (KA0038_000100)



Women's Ensemble with Dark Collar and Matching Sleeve Cuffs (KA0038_000122)



**Women's Ensemble Featuring Coat with Flap Closure and Dark Collar
(KA0038_000078)**



**Women's Ensemble with Dark Collar and Matching Sleeve Cuffs
(KA0038_000096)**



**Women's Ensemble with Dark Collar and Matching Sleeve Cuffs
(KA0038_000099)**



Women's Suit with Yoke and Bow Accents (KA0038_000081)



Women's Suit with Belted Coat and Fitted Skirt (KA0038_000084)



Short-Sleeved Dress with Diagonal Stripes (KA0038_000103)



Women's Loose Overcoat and Men's Suit (KA0038_000111)



Women's Topcoat with Square Patch Pocket (KA0038_000106)



**Long-Sleeved Tunic Blouse with Cinched Waistline
(KA0038_k09_05_01)**



Women's Matchbox Suit in Persimmon (KA0038_000087)



Women's Suit with Belted Jacket and Fitted Skirt (KA0038_000093)



Short Navy Blue Coat with Silk Braided Trim (KA0038_000114)



Multicolor Poncho and Sunhat (KA0038_000118)



Rose Handkerchief Hat with French Ribbon Trim (KA0038_000121)



Rose Handkerchief Hat with French Ribbon Trim (KA0038_000124)



Women's Evening Ensemble with Double-Breasted Top and Fichu Wrap (KA0038_000126)



Evening Dress with Beaded Trim and Matching Stole (KA0038_000127)



Long-Sleeved Evening Dress with Low-Slung Girdle (KA0038_000130)



Pink Shirtdress with Chelsea Collar (KA0038_000085)



Red Striped Pullover with Gabardine Shorts (KA0038_000088)



Women Using Hair Color Selector and Pinking Machine (KA0038_000090)



Corded Overalls with Sash Belt (KA0038_000109)



Women's Ensemble with Gabardine Shorts and Frilled Gingham Blouse (KA0038_000132)



Short Navy Blue Coat and Fitted Skirt (KA0038_000113)



**Two Women's Ensembles with Short Jackets and Gingham Blouses
(Drawing in 2 Parts) (KA0038_000108)**



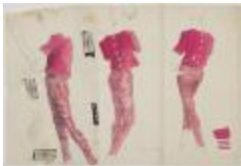
**Long-Sleeved Navy Evening Dress with Low-Slung Giridle
(KA0038_000129)**



**Blue Sheath Dress with White Collar and Sleeve Cuffs
(KA0038_000092)**



**Women's Beachwear Ensemble with Buttoned Dress and Sunhat
(KA0038_000104)**



**Women's Bright Pink and White Ensemble with Buttoned Shirt and
Striped Pants (KA008601_MCB2_f06_01)**



Gold Pencil Skirt and Patterned Jacket (KA008601_MCB3_f01_04)



Pink Slip with Lace (KA008601_MCB3_f02_01)



Pink Girdle and Brassiere with Embroidery (KA008601_MCB3_f02_02)



Women's Ensemble with Pencil Skirt and Loose Buttoned Jacket (KA008601_MCB4_f01_01)



Plaid Women's Ensemble with a Pencil Skirt, Boxy Coat, and Ribbed Turtleneck (KA008601_MCB4_f01_02)



Double-Breasted Fur Coat with Pencil Skirt and Pillbox Hat (KA008601_MCB4_f01_03)



Women's Ensemble with Pencil Skirt and Buttoned Top (KA008601_MCB4_f01_04)



Sack Dress with Bib Collar and Cossack Hat
(KA008601_MCB4_f01_05)



Pleated Nightgown and Frilled Peignoir or Cape
(KA008601_MCB1_f03_01)



Women's Ski Ensemble with Polka-Dotted Parka and Striped Trousers
(KA008601_MCB3_f06_01)



Women's Ski Ensemble with V-Necked Poplin Parka
(KA008601_MCB3_f06_02)



Women's Sleeveless Ski Suit with Striped Top and Belt Satchel
(KA008601_MCB3_f06_03)



Women's Two-Toned Ski Ensemble with Hooded Jacket
(KA008601_MCB3_f06_04)



Blond Wool Sheath Dress and Cape with Blue Fox Fur Trim
(KA008601_MCB4_f05_01)



Yellow Dotted Evening Dress with Matching Shawl
(KA008601_MCB3_f05_01)



Yellow Dotted Evening Dress with Matching Shawl
(KA008601_MCB3_f05_02)



Soft Crepe Dress with Shirred Bodice and Short Cape Sleeves
(KA008601_MCB4_f05_02)



Pleated Black Silk Crepe Dress with Matching Cape
(KA008601_MCB4_f05_03)



Strapless Cocktail Dress with Bubble Skirt
(KA008601_OSxxx1_f03_01)



Gold Pleated Cocktail Dress with Wrap Top
(KA008601_MCB3_f01_01)



Gold Pleated Cocktail Dress with Empire Waistline
(KA008601_MCB3_f01_02)



Gold Pleated Cocktail Dress with Empire Waistline and Bow
(KA008601_MCB3_f01_03)



Women's Swing Coat with Cape Collar (KA008601_OSxx1_f08_02)



Men's Pinstripe Suit with Narrow Necktie (KA008601_OSxx2_f09_01)



Women's Printed One-Piece Swimsuit with Mushroom Hat
(KA008601_OSxxx1_f01_01)



Short-Sleeved Bridesmaid Dress with Embroidered Skirt
(KA008601_MCB2_f02_01)



Wedding Dress with Voluminous Skirt and Lace Top
(KA008601_MCB2_f02_02)



Wedding Dress with Buttoned Bodice and Embroidered Skirt
(KA008601_MCB2_f02_03)



Pink Bridesmaid Dress with Floral Headpiece
(KA008601_MCB2_f02_04)



Women's Ensemble with Large Square Pockets
(KA008601_OSx1_f01_01)



Women's Two-Piece Bathing Suit with "Coolie" Hat
(KA008601_MCB2_f01_01)



Women's Kimono Sleeve Coat with Wide Belt
(KA008601_OSxx1_f08_03)



Waist-Length Fur Jacket with Wide Collar
(KA002201_OSxxx1_f03_01)



Women's Printed Pajama Suit with Tiered Tassel Earrings
(KA002201_OSxxx1_f03_02)



Back View of Nude Woman (KA002201_OSxxx1_f03_05)



Woman Wearing Cloche Hat with Fur Wrap and Scarf
(KA002201_OSxxx1_f03_06)



Man and Woman in Evening Wear (KA002201_OSxxx1_f03_08)



Wedding Party and Guests Featuring Bride in Patterned Dress with Wattleau Train (KA002201_OSxxx1_f03_09)



Woman on Ship Deck Wearing Short Sheath Dress with Cut-Out Design (KA002201_OSxxx1_f04_01)



Printed Women's Ensemble with Harem Trousers (KA002201_OSxxx1_f10_01)



Floral Printed Bridal Gown with Empire Waistline and Flyaway Veil (KA002201_OSxxx1_f10_02)



Saks Fifth Avenue Sales Associate and Two Women in Fur Coats (KA002201_OSxxx1_f10_03)



High-Waisted Sequined Sheath Dress with Yellow Swing Coat (KA002201_OSxxx1_f11_01)



Lime Green Dress and White Mushroom Hat with Multicolor Flowers (KA002201_OSxxx1_f11_02)



**Orange Women's Ensemble Featuring Bellbottom Pants
(KA002201_OSxxx1_f11_04)**



Fur Swing Coat with Oversized Collar (KA002201_OSxxx1_f12_01)



**Brown Double-Breasted Herringbone Coat and Mushroom Hat
(KA002201_kOSxxx7_f01_01)**



**Two Women in Casual Ensembles and Capulet Hats
(KA002201_OSxx3_f10_03)**



**Multicolor Striped Top with Bateau Neckline and Three-Quarter Length
Sleeves (KA006401_OSx1_f02_01)**



Grey Shirtdress with Yellow and Orange Accents
(KA006401_OSx1_f04_03)



Women's Black Turtleneck Top with Oversized Fuchsia Bow
(KA006401_OSx1_f04_04)



Women's Buttoned-Up Ensemble with Short-Sleeved Pink Top and Yellow Pencil Skirt (KA006401_OSx1_f04_05)



Orange Two-Piece Swimsuit with High-Waisted Bottoms
(KA006401_OSx1_f05_01)



Red Evening Dress with Cowl-Necked Front and Back
(KA008601_MCB3_f03_01)



Patio Dress with Ruffled Skirt (KA008601_OSx1_f15_01)



Patio Dress with Fitted Bodice, Tied Waist, and Ruffled Skirt
(KA008601_OSx1_f15_02)



Patio Dress with Fitted Bodice and Ruffled Skirt
(KA008601_OSx1_f15_03)



Partial View of Patio Dress with Fitted Bodice
(KA008601_OSx1_f15_04)



Red Patio Dress with Heeled Sandals (KA008601_OSx1_f15_05)



Partial Sketch of Woman with Arms Extended
(KA008601_OSx2_f03_01v)



Women's Suit with Oversized Bow Collar (KA008601_OSx2_f04_01)



Floor-Length Patterned Housedress (KA008601_OSx2_f04_02)



Women's Summer Ensemble with Floral Shirt and Checked Shorts
(KA008601_OSxx1_f02_01)



Patterned Sheath Dress with Matching Turban
(KA008601_OSxx2_f08_01)



Polka Dotted and Striped Women's Ensembles
(KA008601_OSxxx3_f01_01)



Women's A-Line Coat with Notched Collar
(KA008601_OSxxx3_f04_02)



Overlay Featuring Women's Ensemble with Decorative Bands of Trim
(KA008601_OSxxx7_f03_01)



Two-Piece Pink Lingerie Ensemble with Silver-Gray Embroidery
(KA008601_b02_f05_01)



Pink Knee-Length Skirt Slip with Lace Hem (KA008601_OSx1_f14_01)



Knee-Length Skirt Slip with Lace Hem (KA008601_OSx1_f14_02)



Striped Bathingsuit, Model Reclining, Charcoal Sketch (KA008601_OSx1_f14_03)



Voluminous Circle Skirt with Lace Border (KA008601_OSx1_f14_04)



Women's One-Piece Swimsuit with Striped Panels (KA008601_OSx1_f14_05)



Women's One-Piece Swimsuit with Bifurcated Straps (KA008601_OSx1_f14_06)



Plaid Control-Top Shorts and Brassiere (KA008601_OSx1_f14_07)



Short-Sleeved Shirt Dress and Herringbone Sheath Dress with Rolled Collar (KA008601_OSx2_f03_02)



Sleeveless Cocktail Dress (KA008601_OSxxx1_f02_01)



Red One-Shoulder Evening Dress with Back Panel
(KA008601_OSxxx1_f04_01)



Women's Box Coat with Oversized Hat (KA008601_OSxxx1_f04_02)



Women's Herringbone Suit with Vest (KA008601_OSxxx2_f04_01)



Women's Herringbone Suit with Turban (KA008601_OSxxx2_f05_01)



Women's Herringbone Suit with Turban and Satchel Bag
(KA008601_OSxxx2_f05_02)



Women's One-Piece Printed Swimsuit with Arm Cuff
(KA008601_OSxxx3_f01_02)



Checked Shirtdress with Short Gloves (KA008601_OSxxx3_f01_03)



Fur-Trimmed Coats and Matching Toques (KA008601_OSxxx6_f05_01)



Men and Women in Formalwear (KA008601_OSxxx7_f01_01)



Full-Skirted Cocktail Dress and Double-Breasted Swagger Coat (KA008601_OSxxx7_f01_02)



Parlor Setting Featuring Woman with Evening Dress (KA008601_OSxxx7_f01_03)



Sheath, Empire Waist, and Pencil Dresses (KA008601_OSxxx7_f02_01)



**Women's Ensemble with Decorative Bands of Trim
(KA008601_OSxxx7_f03_01overlay)**



**Women's Ensembles Featuring Shorts and Sleeveless Tops
(KA008601_OSxxx7_f04_01)**



Talmack Design Room (KA008601_MCB4_f04_01)



**Black Color Separation Featuring Layered Skirt Ensemble
(KA008601_OSxxx5_f02_01)**



Portrait of Sophie Gimbel (KA011301_kOSxxx3_f03_01)



**Short-Sleeved Belted Shirtdress with Sunhat
(KA008601_OSxx2_f10_01)**



Women's Day Coat and Matching Dress (KA008601_OSx1_f20_01)



**Women's Day Coat and Matching Dress with Black-Out
(KA008601_OSx1_f20_01overlay)**



**Two-Piece Sleeveless Dress with Scalloped Edges
(KA008601_OSx1_f21_01)**



Sack-Style Shirtdress (KA008601_OSx1_f21_05)



**Plaid Sack Dress and Sleeveless Shift Dress with Bow
(KA008601_OSx1_f21_06)**



Striped Shift Dress with Cut-Out Collar (KA008601_OSx2_f01_01)



Shift Dress, Double-Breasted Coat, and Women's Suit
(KA008601_OSxxx7_f05_01)



A-Line Dresses with Short Sleeves (KA008601_OSxxx7_f05_02)



Long-Sleeved Tunic Dress with Split Neckline
(KA008601_OSx2_f01_03)



Belted Beach Romper with Safari Hat (KA008601_OSx2_f02_01)



Partial Sketch of Woman with Safari Hat (KA008601_OSx2_f02_01v)



Short-Sleeved Shift Dress with Rolled Collar
(KA008601_OSx2_f02_02)



Pencil Skirt with Loose Patterned Tunic (KA008601_OSx2_f03_01)



Short-Sleeved Shift Dress with Gathered Yoke (KA008601_OSx1_f21_02)



Polka-Dotted Dress with Rolled Collar and Back Panel (KA008601_OSx1_f21_03)



Double-Breasted Dress with Notched Collar and Matching Hat (KA008601_OSx1_f21_04)



Double-Breasted Trapeze Dress and Bow-Collared Shift Dress (KA008601_OSx2_f05_01)



Women's Ensembles with Narrow Trousers (KA008601_OSxxx7_f02_02)



Women's Printed Ensemble with Wrap Skirt, Bikini Top, and Bolero Jacket (KA002201_OSxxx1_f04_08)



Flowing Evening Dress with Wrapped Bodice (KA002201_OSxxx1_f04_09)



Three Women in Various Fur Coats (KA002201_OSxx3_f10_01)



Asymmetrical Evening Dress with Oversized Bow (KA002201_OSxx3_f10_02)



Woman in Long Coat with Saks Fifth Avenue Shopping Bag (KA002201_OSxx3_f10_04)



Women's Ensemble Featuring Knee-High Boots and Zebra Striped Coat with Hood (KA002201_OSxx3_f10_05)



Wrap Dress with All-Over Geometric Print (KA002201_OSxx3_f10_06)



Women's Striped Romper with Matching Turban (KA008601_OSx2_f01_02)



Pleated and Diamond-Patterned Trapeze Dresses (KA008601_OSx2_f05_02)



Pleated Trapeze Dress with Long Sleeves (KA008601_OSx2_f06_01)



Sleeveless Tent Dress with Rolled Collar (KA008601_OSx2_f06_02)



Women's Ensemble Featuring Balloon Pants, Cartwheel Hat, and Top with Funnel Neckline (KA002201_OSxxx1_f01_02)



**Sleeveless Pleated Dress with Long Tiered Skirt
(KA002201_OSxxx1_f01_03)**



**Woman with Long Hair Wearing Fitted Jacket with Oversized Ruffle
Collar and Peplum Waist (KA002201_OSxxx1_f03_03)**



**Woman with Short Hair Wearing Fitted Jacket with Oversized Ruffle
Collar and Peplum Waist (KA002201_OSxxx1_f03_04)**



**Sweater, Boots, Socks, and Purse with Assorted Ski Equipment
(KA002201_OSxxx1_f04_03)**



Swimsuit with Cut-Out Center (KA002201_OSxxx1_f05_01)



**Women's Ensemble Featuring A-Line Wrap Skirt and Short-Sleeved
Jacket (KA002201_OSxxx1_f05_02)**



Men's Long-Sleeved Collared Shirt with Partial Button Placket
(KA008601_OSxxx3_f04_01)



Man and Woman Lounging in Casual Ensembles
(KA002201_OSxxx1_f01_01)



Woman Lounging in Floral Printed Dress with Puff Sleeves
(KA002201_OSxxx1_f04_02)



Man and Two Women Wearing Cowboy Inspired Ensembles
(KA002201_OSxxx1_f04_05)



Lord & Taylor Advertisement Featuring Two Women's Ensembles by Butte Knitwear (KA002201_OSxxx1_f02_07)



Lord & Taylor Advertisement Featuring Garnet Wool Ensemble by Geoffrey Beene (KA002201_OSxxx1_f02_01)



Lord & Taylor Advertisement Featuring Women's Sweater Ensemble by Cacharel (KA002201_OSxxx1_f02_02)



Lord & Taylor Advertisement Featuring Maidenform Lingerie Ensembles Designed by Donald Brooks (KA002201_OSxxx1_f02_04)



Lord & Taylor Advertisement Featuring Two Layered Fall Sportswear Ensembles by Act III (KA002201_OSxxx1_f02_08)



Lord & Taylor Advertisement Featuring "Haberdashery" Ensemble by Ralph Lauren (KA002201_OSxxx1_f02_03)



Lord & Taylor Advertisement Featuring Baby Llama Wrap Coat by Hobson (KA002201_OSxxx1_f02_06)



Lord & Taylor Advertisement Featuring Guerlain "Body Shampoo" Bottles (KA002201_OSxxx1_f02_05)



Lord & Taylor Advertisement Featuring Woven Bag by Judith Leiber
(KA002201_OSxxx1_f12_02)



Lord & Taylor Advertisement Featuring Boxer Pants by Victor Joris
(KA002201_OSxxx1_f12_03)



Long Wrap Coat with Cape Effect (KA002201_OSxxx1_f01_04)



Women's Suit with Collarless Jacket, Pencil Skirt, and Plaid Blouse
(KA002201_OSxxx1_f01_05)



Women's Ensemble with Dark Pants and Loose Patterned Top
(KA002201_OSxxx1_f03_07)



Women's Ensemble Featuring Duster Jacket and Pencil Skirt
(KA002201_OSxxx1_f04_04)



Long Color-Blocked Cardigan with Pleated Skirt
(KA002201_OSxxx1_f04_06)



Women's Ensemble Featuring Pleated Plaid Skirt and Sweater
(KA002201_OSxxx1_f04_07)



Plaid Women's Ensemble Featuring Blanket Cape
(KA002201_OSxxx1_f04_10)



Striped Dress with Full Skirt (KA002201_OSxxx1_f04_11)



Women's Ensemble Featuring Peasant Blouse and Midi-Length Skirt
(KA002201_OSxxx1_f04_13)



One-Sleeved Evening Dress with High Skirt Slit
(KA002201_OSxxx1_f05_03)



Women's Ensemble with Coat, Sweater Vest, and Plaid Skirt
(KA002201_OSxxx1_f05_04)



Women's Ensemble Featuring Patterned Cardigan and Short Gathered Skirt
(KA002201_OSxxx1_f06_01)



Women's Ensemble Featuring High Leather Boots and Jacket with Cape Back
(KA002201_OSxxx1_f06_02)



Women's Evening Ensemble Featuring Ball Gown Skirt and Floral Sash Belt
(KA002201_OSxxx1_f06_03)



Rough Sketch of Woman Wearing Suit with Collarless Jacket and Plaid Blouse
(KA002201_OSxxx1_f06_04)



Women's Floral Printed Blazer and Stirrup Pants
(KA002201_OSxxx1_f06_05)



Women's Oversized Blazer and Knee-Length Shorts
(KA002201_OSxxx1_f06_06)



Women's Evening Ensemble Featuring Ball Gown Skirt and Bolero Jacket
(KA002201_OSxxx1_f06_07)



Loose Orange Dress with Gold Jewelry and Yellow Stockings
(KA002201_OSxxx1_f07_01)



Peach Wrap Skirt with Printed Green Blouse
(KA002201_OSxxx1_f07_02)



Backless Floral Printed Dress (KA002201_OSxxx1_f07_03)



Black Women's Ensemble with Wide-Legged Pants
(KA002201_OSxxx1_f07_04)



Women's Ensemble Featuring Cable-Knit Sweater and Plaid Maxi-Length Skirt
(KA002201_OSxxx1_f07_05)



Long Dotted Dress and "Coolie" or "Saucer" Hat
(KA002201_OSxxx1_f07_06)



Ruffled Skirt, Wide Belt, and Collared Blouse
(KA002201_OSxxx1_f07_07)



Black and Bright Pink Dress with Fitted Skirt and Dolman Sleeves
(KA002201_OSxxx1_f07_08)



Women's Ensemble Featuring Collared Top and Narrow Skirt with Horse Race Motifs
(KA002201_OSxxx1_f07_10)



One-Sleeved Evening Dress with High Skirt Slit
(KA002201_OSxxx1_f07_11)



Long-Sleeved Orange Top with Matching Maxi Skirt
(KA002201_OSxxx1_f07_12)



Women's Ensemble Featuring Multicolor Striped Dress and Long Black Blazer (KA002201_OSxxx1_f07_13)



Black Women's Ensemble with Short-Sleeved Embellished Bolero Jacket (KA002201_OSxxx1_f07_14)



Purple and Green Dotted Sundress with Off-the-Shoulder Ruffled Neckline (KA002201_OSxxx1_f08_01)



Woman in Red and Black Plaid Top with Dog (KA002201_OSxxx1_f08_02)



Black and Bright Pink Dress with Fitted Skirt and Dolman Sleeves (KA002201_OSxxx1_f08_03)



Rough Sketch of Dress with Cut-Out Motifs (KA002201_OSxxx1_f09_01)



Women's Ensemble Featuring Pullover and Pants
(KA002201_OSxxx1_f09_02)



Women's Brown Plaid Suit with Tan Collared Shirt
(KA002201_OSxxx1_f11_03)



Short Black Sheath Dress with Oversized Tan Blazer and Layered Pearl Necklace (KA002201_OSxxx1_f11_05)



Short Black Sheath Dress with Oversized Tan Blazer
(KA002201_OSxxx1_f11_06)



Schoolgirl Dress with Exaggerated Drop Waist and Oversized Collar
(KA002201_OSxxx1_f04_12)