



Joseph Marcella (KA0123\_b01\_f01\_01)

---



Architectural and Engineering News article featuring Joseph Marcella's chair (KA0123\_b01\_f04\_06)

---



Elevation drawing of chair (KA0123\_kOSx4\_f10\_01)

---



Reproduction of elevation drawing of chair (KA0123\_kOSx4\_f10\_02)

---



Drawing depicting how chairs can be stacked (KA0123\_kOSx4\_f10\_03)

---



Reproduction of drawing depicting how chairs can be stacked (KA0123\_kOSx4\_f10\_04)

---



Pencil sketch of chairs (KA0123\_kOSx4\_f10\_05)



Pencil sketch of chairs (KA0123\_kOSx4\_f10\_06)



Marker sketch from spiral notebook (KA0123\_b01\_f08\_01)



Marker sketch (KA0123\_b01\_f08\_02)



Marker sketch (KA0123\_b01\_f08\_03)



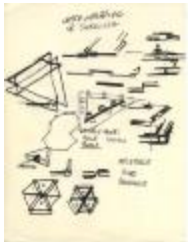
Marker sketch titled "semi-inflatible" (KA0123\_b01\_f08\_04)



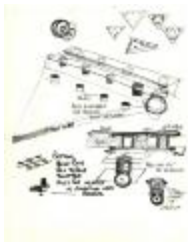
Marker sketch (KA0123\_b01\_f08\_05a)



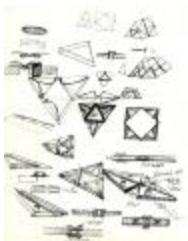
Marker sketch (KA0123\_b01\_f08\_05v)



Layer Wrapping or Shingling (KA0123\_b01\_f08\_06)



Marker sketch (KA0123\_b01\_f08\_07)



Marker sketch (KA0123\_b01\_f08\_08)



Handwritten document "Breakdown of M.E.S.S." (KA0123\_b01\_f08\_09)



Handwritten document "3. Portable Shelter" (KA0123\_b01\_f08\_10)



Handwritten document "Research the existing line of tents and portable living environments" (KA0123\_b01\_f08\_11)



Handwritten document "Primary use of prefab structural building panels" (KA0123\_b01\_f08\_12)



Handwritten document "Possibilities with this system" (KA0123\_b01\_f08\_13)



Construction of a M.E.S.S. Unit (KA0123\_b01\_f09\_01)



Construction of a M.E.S.S. Unit (KA0123\_b01\_f09\_02)



Black and white photograph of stackable fiberglass chair (3/4 front view, looking down) (KA0123\_kOSx4\_f10\_07)



Black and white photograph of stackable fiberglass chair (side view) (KA0123\_b01\_f04\_01)



Black and white photograph of stackable fiberglass chair (rear view) (KA0123\_b01\_f04\_02)



Black and white photograph of stackable fiberglass chair (front view) (KA0123\_b01\_f04\_03)



Black and white photograph of stackable fiberglass chair (3/4 view) (KA0123\_b01\_f04\_04)



Typed description of "stacking plastic armchair" (KA0123\_b01\_f04\_05)



**Danny Gildesgame Comprehensive Anticipatory Design Scientist**  
(KA0123\_kOSx4\_f09\_01)



**Neato Inflato Structures at the Environmental Teach-In**  
(KA0123\_kOSx4\_f09\_02)



**Stewart Brand Originator of the Whole Earth Catalog**  
(KA0123\_kOSx4\_f09\_03)



**Immanuel Velikovsky Speaks on Cosmic Upheavals**  
(KA0123\_kOSx4\_f09\_04)



**Press release text about Joseph Marcella: "Leisure Time' Subject of Fifth Armco Student Design Program"** (KA0123\_b01\_f07\_01)



**Press release photograph for Armco Student Design Program depicting Joseph Marcella** (KA0123\_b01\_f07\_02)



**Press release text about Michael Rosenthal: "Leisure Time' Subject of Fifth Armco Student Design Program" (KA0123\_b01\_f07\_03)**



**Press release photograph for Armco Student Design Program depicting Michael Rosenthal (KA0123\_b01\_f07\_04)**



**Press release text: "Concepts for Tomorrow's Leisure, Parsons School of Design" (page 1 of 2) (KA0123\_b01\_f07\_05)**



**Press release text: "Concepts for Tomorrow's Leisure, Parsons School of Design" (page 2 of 2) (KA0123\_b01\_f07\_06)**



**"Leisure Time' Subject of Fifth Armco Student Design Program" (KA0123\_b01\_f07\_08)**



**Press release text: "Leisure Time' Subject of Fifth Armco Student Design Program" (2 of 4) (KA0123\_b01\_f07\_09)**



**Press release text: "Leisure Time' Subject of Fifth Armco Student Design Program" (3 of 4) (KA0123\_b01\_f07\_10)**



**Press release text: "Leisure Time' Subject of Fifth Armco Student Design Program" (4 of 4) (KA0123\_b01\_f07\_11)**



**"What Have We Learned?" text of speech by unidentified speaker (KA0123\_b01\_f07\_12)**



**An Infinite Number of Modular Structures (page 2) (KA0123\_b01\_f07\_20)**



**Black and white photograph of hands constructing M.E.S.S. model with black background (KA0123\_b01\_f09\_03)**



**Black and white photograph of hands constructing M.E.S.S. model with gray background (KA0123\_b01\_f09\_04)**





Black and white photograph of hands constructing M.E.S.S. model with white background (KA0123\_b01\_f09\_05)



M.E.S.S. (KA0123\_b01\_f09\_06)



Black and white photograph of a tensegrity constructed from wire mesh (KA0123\_b01\_f09\_07)



Reflective Object in Pine Tree (KA0123\_b01\_f13\_s01)



Reflective Object in Dark Woodland Setting (KA0123\_b01\_f13\_s02)



Paper Model of Modular Design on Forest Floor Amid Rocks (KA0123\_b01\_f13\_s03)



Detail of Modular Environmental Structural System, or M.E.S.S. (KA0123\_b01\_f13\_s04)



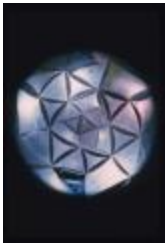
Modular Design Constructed from Reflective Material in Pine Tree (KA0123\_b01\_f13\_s05)



**Two Modular Designs Constructed from Reflective Material Set in Bed of Small Stones (KA0123\_b01\_f13\_s06)**



**Paper Model of Modular Design Set Amid Stones (KA0123\_b01\_f13\_s07)**



**Detail of Modular Environmental Structural System, or M.E.S.S. (KA0123\_b01\_f13\_s08)**



**Modular Design Constructed from Reflective Material in Pine Tree (KA0123\_b01\_f13\_s09)**



**Modular Design Constructed from Reflective Material in Pine Tree (KA0123\_b01\_f13\_s10)**



**Modular Design Constructed from Reflective Material in Grass (KA0123\_b01\_f13\_s11)**



**Modular Design Constructed from Reflective Material in Grass (KA0123\_b01\_f13\_s12)**



**Modular Design Constructed from Reflective Material in Pine Tree (KA0123\_b01\_f13\_s13)**



**Detail of Modular Environmental Structural System, or M.E.S.S.  
(KA0123\_b01\_f13\_s14)**



**Modular Design Constructed from Reflective Material in Grass  
(KA0123\_b01\_f13\_s15)**



**Paper Model of Modular Design Set in Soil (KA0123\_b01\_f13\_s16)**



**Joseph Marcella Posing with His Modular Environmental Structural  
System, or M.E.S.S. (KA0123\_b01\_f13\_s17)**



**Modular Design Constructed from Reflective Material on Forest Floor  
(KA0123\_b01\_f13\_s18)**



**Full Size Modular Design Constructed from Reflective Material in a  
Field (KA0123\_b01\_f13\_s19)**



**Full Size Modular Design in Process of Being Assembled or  
Disassembled (KA0123\_b01\_f13\_s20)**



Pieces of Full Size Modular Design in Back of and Leaning on Car Parked in a Driveway (KA0123\_b01\_f13\_s21)



Full Size Modular Design Constructed from Reflective Material in a Field (KA0123\_b01\_f13\_s22)



Modular Environmental Structural System, or M.E.S.S., in Second Floor Building Window as Seen from Street (KA0123\_b01\_f13\_s23)



Person Seated Inside Full Size Modular Design Constructed from Reflective Material (KA0123\_b01\_f13\_s24)



Pieces of Full Size Modular Design in Field (KA0123\_b01\_f13\_s25)



Third Floor Plan of Parsons School of Design (KA0123\_b01\_f02\_01)



Fourth Floor Plan of Parsons School of Design (KA0123\_b01\_f02\_02)



**Sixth Floor Plan of Parsons School of Design (KA0123\_b01\_f02\_03)**



**An Infinite Number of Modular Structures (page 1)  
(KA0123\_kOSx4\_f12\_01)**



**Minutes of the Parsons School of Design Student Council Concerning  
Earth Day (KA0123\_000007)**



**Letter from Governor Nelson A. Rockefeller to Parsons School of  
Design Student Council President Charles "Chuck" Thompson  
Regarding Earth Day (KA0123\_000008)**



**Earth Day Environmental Teach-In (KA0123\_000003)**



**Memorandum from Dean Benjamin de Brie Taylor Announcing  
Cancellation of Parsons School of Design Classes on Earth Day  
(KA0123\_000001)**



**Memorandum from Dean Benjamin de Brie Taylor to Director of Maintenance Frank Vanacek Regarding Earth Day Preparations (KA0123\_000006)**



**Parsons School of Design Auditorium on Earth Day (KA0123\_b01\_f03\_01)**



**Student Sitting with Vegetables on Earth Day (KA0123\_b01\_f03\_02)**



**Student Sitting with Vegetables on Earth Day (KA0123\_b01\_f03\_03)**



**Stewart Brand and Students on Earth Day (KA0123\_b01\_f03\_04)**



**Stewart Brand and Students on Earth Day (KA0123\_b01\_f03\_05)**



**Student inside of Neato Inflato Structure (KA0123\_b01\_f03\_06)**



**Schedule of Events for Earth Day (KA0123\_000002)**



**Neato Inflato Structure in Auditorium (KA0123\_b01\_f13\_s58)**



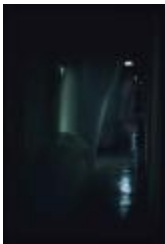
**Detail of Neato Inflato Structure (KA0123\_b01\_f13\_s59)**



**Neato Inflato Structure in Auditorium (KA0123\_b01\_f13\_s60)**



**Stage in Parsons School of Design Auditorium (KA0123\_b01\_f13\_s61)**



**Neato Inflato Structure in Hallway (KA0123\_b01\_f13\_s62)**



**Neato Inflato Structures (KA0123\_b01\_f13\_s63)**



**Neato Inflato Structure in Auditorium (KA0123\_b01\_f13\_s64)**



**Immanuel Velikovsky Speaking at Podium (KA0123\_b01\_f13\_s65)**



**Parsons School of Design Students at Earth Day Teach-in (KA0123\_b01\_f13\_s66)**



**Neato Inflato Structures (KA0123\_b01\_f13\_s67)**



**Neato Inflato Sculpture in Hallway (KA0123\_b01\_f13\_s68)**



**Stewart Brand Speaking on Stage (KA0123\_b01\_f13\_s69)**



**Detail of Earth Day Balloons on Neato Inflato Structure (KA0123\_b01\_f13\_s70)**





**Neato Inflato Structure in Hallway (KA0123\_b01\_f13\_s72)**



**Michael Rosenthal Speaking at Podium (KA0123\_b01\_f13\_s73)**



**Neato Inflato Structure in Auditorium (KA0123\_b01\_f13\_s74)**



**Neato Inflato Structures (KA0123\_b01\_f13\_s75)**



**Stewart Brand Speaking on Stage (KA0123\_b01\_f13\_s76)**



**Natural Lunch Hand-out (KA0123\_000004)**



**Bibliography on Nutritional Information Sources (KA0123\_000005)**



**Environmental Teach-In Announcement (KA0123\_000009)**



**Earth Day Environmental Teach-In (KA0123\_000010)**



**New York Daily News, Cover (KA0123\_kOSx4\_f08\_01)**



**New York Daily News, Page 1 (KA0123\_kOSx4\_f08\_02)**



**New York Daily News, Page 2 (KA0123\_kOSx4\_f08\_03)**



**New York Daily News, Page 3 (KA0123\_kOSx4\_f08\_04)**



New York Daily News, Page 4 (KA0123\_kOSx4\_f08\_05)



New York Daily News, Page 5 (KA0123\_kOSx4\_f08\_06)



New York Post, Cover (KA0123\_kOSx4\_f08\_07)



New York Post, Page 3 (KA0123\_kOSx4\_f08\_08)



Typed rejection letter from InterRoyal Corporation to Joseph Marcella explaining why the firm is not interested in manufacturing his fiberglass chair (KA0123\_b01\_f04\_12)



Photocopy of clipping from Smithsonian magazine about one-piece plastic chairs: "Everybody Take a Seat" (KA0123\_b01\_f04\_07)