



Press clippings 4: 1927-1931 Apr, 1933, 1935, 1939
(NS030101_PC_04_OCR)



Memorial Epitaph (NS090101_000037)



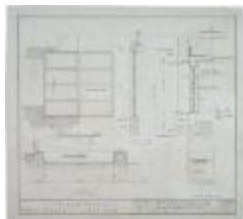
Full Scale Lettering for Bernhard Mayer Auditorium Memorial Epitaph
(NS090101_000038)



Elevations of Main Lobby (NS090101_000002)



Rough Sketch of Proscenium Arch in Auditorium (NS090101_000003)



Window Details Fifth Floor Student Lunch Room (NS090101_000010)



Proscenium Elevation (NS090101_000012)



Elevation of Proscenium Arch in Auditorium, Side View
(NS090101_000013)



Perspective of Dance Studio (NS090101_000014)



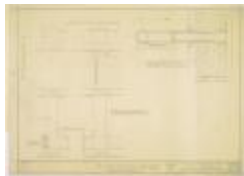
Exterior View (NS090101_000015)



Elevation of Statue and Detail of Wooden Pedestal for Director's Office (NS090101_000016)



Furniture Drawings (NS090101_000017)



Full Size Details of Aluminum Railing and Brackets for Recreation Room (NS090101_000018)



Full Size Detail of Circular Steps in Recreation Room in Basement (NS090101_000019)



Details of Classroom No. 5 Second Floor (NS090101_000020)



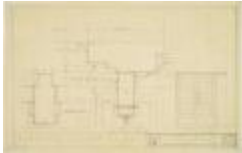
1/2 Inch Scale Detail of Curve of Stage Platform in Auditorium (NS090101_000022)



Couch for Exhibition Room (NS090101_000023)



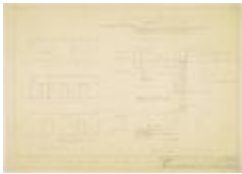
Revisions for Third and Fourth Floors (NS090101_000024)



Revision of Lobby Doors (NS090101_000025)



Revision for Greenhouse Sixth Floor (NS090101_000026)



Reception Room Third Floor (NS090101_000027)



Detail of Sound Projector Room (NS090101_000028)



Details of Clocks (NS090101_000030)



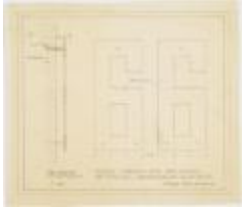
Revision of Fan Room Louvres, Mezzanine Grilles, Also Closet Window (NS090101_000031)



Axonometric Drawing (NS090101_000032)



Color Diagram for Circular Room in Basement (NS090101_000033)



Street Numerals for New School of Social Research, 66 W12th St. (NS090101_000034)



Alphabet for Lower Part of Memorial Inscription (NS090101_000035)



Lettering for the New School of Social Research (NS090101_000036)



Longitudinal Section Taken Through Center Line of Building (NS090101_000039)



Transverse Section (NS090101_000040)



Details of Stage and Side Galleries (NS090101_000041)



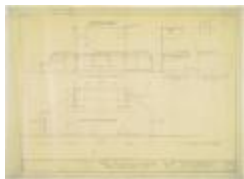
Ceiling Diagram (NS090101_000042)



**Full Size Details of Auditorium Ceiling Light Covers
(NS090101_000043)**



Class Room Seating Plan (NS090101_000044)



Detail of Desk and Platform for Classroom No. 2 (NS090101_000045)



Detail of Platform for Classroom No. 5 (NS090101_000046)



Details of Board Room at Third Floor (NS090101_000047)



Details of Faculty Dining Room (NS090101_000048)



**Plan and Elevations of Students' Dining Room (Orozco Room) and
Exhibition Room (NS090101_000049)**



Full Scale Details of Student Lunch Room (NS090101_000050)



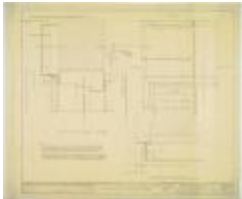
Details of Library Stairs (NS090101_000052)



Detail of Gates at Head of Library Stairs at Fifth Floor (NS090101_000053)



Library Stairs and Delivery Desk Details (NS090101_000054)



Full Size Detail of Memorial Tablet in Street Entrance Lobby (NS090101_000055)



Details of Entrance Lobby (NS090101_000057)



Detail of Entrance Lobby Door and Metal Soffits (NS090101_000058)



Details of Entrance Lobby Doors and Granite (NS090101_000059)



Plan of Mezzanine (NS090101_000060)



Plan of Mezzanine Back-Stage (NS090101_000061)



Details of Public Stairs to Mezzanine (NS090101_000062)



Details of Talk-Over Niches (NS090101_000063)



Details of Boardroom at Third Floor (NS090101_000064)



Ass. Director's & Secretary's Rooms 3rd Floor (NS090101_000065)



Plan, Elevations and Details of Director's Room and Secretary's Office Third Floor (NS090101_000066)



Full Size Details for Director's & Ass't. Director's Room Third Floor (NS090101_000067)



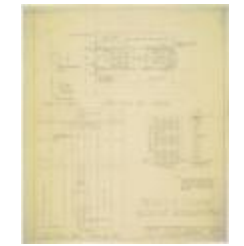
Mechanical drawings for Projection Room and Generator Room (NS090101_000068)



Schedules for Registers and Radiator Grilles (NS090101_000069)



Detail of Radiator Grilles (NS090101_000070)



Details of Folding Gates at Passages Nos. 1 & 2 (NS090101_000071)



Details of Bench for Secretary's Rooms (NS090101_000073)



Furniture Drawings (NS090101_000074)



Shelving for Bookstore on Mezzanine (NS090101_000075)



**Bookcases & Linen Closet 3rd Floor Janitor's Apartment
(NS090101_000076)**



**Kitchen Cabinet Details for Spaces on 3rd Floor and 6th Floor
(NS090101_000077)**



**Axonometric Drawing of Fifth Floor Gallery and Library Stairway
(NS090101_000001)**



Rounded Hallway, Probably the Lobby (NS090101_000083)



**Rough Sketches of Proscenium Arch in Auditorium
(NS090101_000004)**



**Details of Front Windows on Mezz., 2nd, 3rd, 4th, 5th, and 6th Floors
(NS090101_000081)**



Details of Front Windows (NS090101_000082)



Types of Door Bucks (NS090101_000009)



Mechanical Revisions (NS090101_000029)



Detail of Windows and Door between Conservatory and Living Room (NS090101_000079)



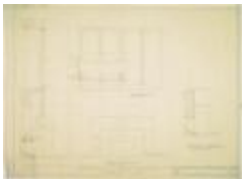
Lighting Fixtures (NS090101_000072)



Faculty Dining Room Tables (NS090101_000008)



F.S. Detail of Plaster Grille in Auditorium (NS090101_000005)



Window Details and Univent Installations in Classrooms No. 1 & 3 (NS090101_000080)



Plan of Library & Details of Tables (NS090101_000051)



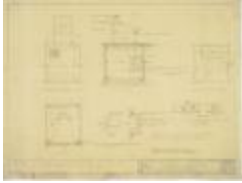
Details of Entrance Lobby (NS090101_000056)



Basement Revision (NS090101_000007)



Skylight in Penthouse Roof (NS090101_000078)



Desk in Auditorium (NS090101_000006)



F.S. Cross Section of Moulding in Benton Room (NS090101_000084)



**Press clippings 7: 1931 Aug, 1932 Sep-1933 Apr
(NS030101_PC_07_OCR)**



**Drawing Showing Acoustical Treatment in Classrooms #1, #3, #4, and
#6 (NS090101_000021)**



New School Bulletin Vol. VIII, No. 7 (NS030102_bull0807)



Struggle in the Occident (NS030501_000001)