



**Lighting Education in Schools of Architecture**  
(PC020404\_1987\_ggiladi)



**LSA: A Luminaire Selection Aid Program** (PC020404\_1988\_jyao)



**A Reevaluation of Permanent Supplementary Artificial Lighting Installation (PSALI)** (PC020404\_1990\_mloeffler)



**Prism Light Guide Luminaires as an Alternative to Conventional Roadway and Pedestrian Luminaires** (PC020404\_1990\_hershmans)



**Cultural Analysis in Lighting: Focusing on Two Typical Upper-Middle Class Apartments in Seoul and New York City**  
(PC020404\_1991\_schung)



**The Process of Comparing and Selecting Lamps in Architectural Lighting Design Evaluation and Suggestions**  
(PC020404\_1992\_dedenbaum)



**Designing with Existing Objects: Environmentally Sensitive Decorative Luminaires** (PC020404\_1992\_vkorkkonen)



**Untitled Thesis Project (PC020404\_1992\_mszpiro)**



**Untitled Thesis Project (PC020404\_1992\_mszpiro\_feature)**



**Organization of the Load and Channel Information for the Specification of Architectural Lighting Systems (PC020404\_1992\_pgregory)**



**The Significance of the Bauhaus Lighting Fixtures, 1923-1928 (PC020404\_1992\_sbeganskas)**



**Beth Sholom Synagogue (PC020404\_1992\_nchin)**



**Influence with Light: Richard Kelly's Technique for Illuminating the Four Seasons Restaurant (PC020404\_1993\_aschiffers)**



**Color of Daylight: A Study of Air Pollution and Water Vapour  
(PC020404\_1993\_hforrest)**



**The Convergence of Time and Light on the Architectural Forms of  
Bruno Taut and Le Corbusier (PC020404\_1993\_jcollins)**



**Illumination for the Japanese Garden a Conceptual Approach  
(PC020404\_1993\_kmayumi)**



**Light in Tadao Ando's Architecture (PC020404\_1993\_csicangco)**



**Creation of a Brazilian Spirit in the Denuded Architecture of Brazilia  
Through Lighting Design (PC020404\_1993\_mszipiro)**



**Shadows of Light New Visual Premises for Architectural Lighting  
Design (PC020404\_1993\_nring)**



**Lighting Design in Mexico Should Reflect Her Cultural Heritage and Current Technology (PC020404\_1994\_egarciacarrera)**



**Art Deco Lighting Fixtures (PC020404\_1994\_jkang)**



**Environmental Lighting Design Proposal: Case Study St. Mary's Medical Center (PC020404\_1994\_jkim)**



**Lighting Planning for Complex Shopping Facilities: Centered on Environmental Lighting Sculpture Including Display Concept (PC020404\_1994\_wpark)**



**Illuminations of a South Beach Show Shop (PC020404\_1994\_jharris)**



**The Vision Enhancer (PC020404\_1994\_maccumanno)**



**The Magical Effects of Light and Color (PC020404\_1994\_mbenora)**



**Children's Museum Lighting (PC020404\_1994\_ebae)**



**The Use of Light in Islamic Architecture (PC020404\_1994\_emcbarnette)**



**Evolution of a Museum Lighting Design: The Solomon R. Guggenheim Museum (PC020404\_1994\_lantonow)**



**Lighting Design Facilitates Change at Fordham University Chapel (PC020404\_1994\_mfreundlich)**



**The Lighting Effects on Children in Learning Environments (PC020404\_1994\_slee)**



**Lighting for Security in Urban Situation and Dumbo  
(PC020404\_2006\_jpark)**



**The Integration of Light Therapy Into the Design of Mental Health Care  
Facilities (PC020404\_2007\_ahumphries)**



**Moucharabieh: From Tradition to Modernity from a Window Treatment  
to a Façade Treatment (PC020404\_2007\_csaroufim)**



**An Alternative View (PC020404\_2007\_edevries)**



**Daylight, Sustainability, and the Passive Pavillion  
(PC020404\_2007\_dhunt)**



**Lighting Design for Seniors (PC020404\_2007\_htseng)**



**Light as a Communicative Environmental Cue**  
(PC020404\_2007\_jbickford)



**Enchanted Night: Darkness Visible** (PC020404\_2007\_jivansson)



**The Integration of Architectural Lighting in MoMA**  
(PC020404\_2007\_lee)



**Finding the Balance: Developing a New Standard in Energy Efficiency and Sustainability for the Illuminated Residential Environment**  
(PC020404\_2007\_jsmith)



**Light as a Medium to Enliven Current Coney Island**  
(PC020404\_2007\_jkim)



**Lamps Are Boring: How Building a Positive Experience of Use Can Bring About the Future of Portable Fixture Design**  
(PC020404\_2007\_neconomidis)



**Dynamic Roadway Lighting (PC020404\_2007\_pkalpana)**



**The Reclamation of Prison: Lighting as an Agent for the Expression of 19th Century Prison History (PC020404\_2007\_pyang)**



**Light as the Connector for Dynamic Environments (PC020404\_2007\_smoreno)**



**Daylight Design for Museum (PC020404\_2007\_yppyun)**



**Creating a Respite for New Yorkers: Contemplative and Meditative Experience, Created with Light (PC020404\_2008\_alee)**



**Light and Glass (PC020404\_2008\_cliao)**



**Illumination: Morningside Park (PC020404\_2008\_cvatakapaibool)**





**Lighting Within Context: (Re)discovering Place Through Light  
(PC020404\_2008\_ekremezi)**



**The Creation of an Interior Airport Environment that Helps Reducing  
Jet Lag and Stress (PC020404\_2008\_gmanrique)**



**A Children's Library: Light and Creative Learning  
(PC020404\_2008\_jtchah)**



**Light Stream (PC020404\_2008\_kvan)**



**Illuminating Liminal Space: Designing New Time and Scale Perception  
in the Ferryboat Terminal (PC020404\_2008\_mkarakaya)**



**Image of the City At Night: Patterns of Perception  
(PC020404\_2008\_pdung)**



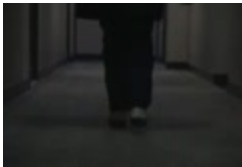
**Landmarket (PC020404\_2008\_smaacaron)**



**Story in Light: Acknowledging the Implication of Lighting Effects on Narrative Structure in Science Fiction Film**  
(PC020404\_2008\_smanoch)



**Visual Audition: The Integration of Sound and Light Phenomena**  
(PC020404\_2008\_twatson)



**New Aquarium Experience** (PC020404\_2008\_wchantarkolkit)



**Lighting Environment as an Experiential Space for Circadian: Rhythm Based Disorder Patients** (PC020404\_2008\_yhur)



**Connecting the Waterfront and the Neighborhoods with Light**  
(PC020404\_2008\_ymin)



**Eastern Light: A Study of Expressing Eastern Philosophy with Electric Lighting Design in Contemporary Architecture** (PC020404\_2009\_aliu)



**Designing the Lit Environment as a Communication Tool within the: Pervasive Developmentally Disordered Population**  
(PC020404\_2009\_bmcmenemy)

Light and Glass

2009

Light and Glass

**Light and Glass (PC020404\_2009\_cliao)**

Dynamic Building Skins in Architectural Lighting

2009

Dynamic Building Skins in Architectural Lighting

**Dynamic Building Skins in Architectural Lighting: The Building as Enormous Luminaire (PC020404\_2009\_clin)**

Light: An Intangible Definition

2009

Light: An Intangible Definition

**Light: An Intangible Definition (PC020404\_2009\_cmiranda)**

Campus and Community Pedestrian Lighting

2009

Campus and Community Pedestrian Lighting

**Campus and Community Pedestrian Lighting: Making Connections and Enhancing the Journey (PC020404\_2009\_dmyrie)**

Storytelling through Light

2009

Storytelling through Light

**Storytelling through Light (PC020404\_2009\_eheo)**

Light Memorial: Memory in Light

2009

Light Memorial: Memory in Light

**Light Memorial: Memory in Light (PC020404\_2009\_epark)**

Restoring Unity of Luminous Skyscrapers

2009

**Restoring Unity of Luminous Skyscrapers (PC020404\_2009\_knelson)**

Restoring Unity of Luminous Skyscrapers

Reinventing Brand Identities with Light

2009

**Reinventing Brand Identities with Light (PC020404\_2009\_mbanuelos)**

Reinventing Brand Identities with Light



**Daylight: A Redefined Architectural Element (PC020404\_2009\_mpetra)**

Darkness and the Nocturnal City

2009

**Darkness and the Nocturnal City (PC020404\_2009\_nfreedman)**

Darkness and the Nocturnal City

Light as a Way-Finding Method

2009

**Light as a Way-Finding Method (PC020404\_2009\_mrhee)**

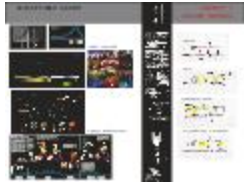
Light as a Way-Finding Method



**Transformative Lighting for Urban Public Space (PC020404\_2009\_srho)**



**Skin of Light: A Tool to Reorganize the Nocturnal Street Image  
(PC020404\_2009\_ychen)**



**Scripting Light: Narrative Lighting for the Performance of Architectural  
Space (PC020404\_2010\_apappas)**



**Drawing Light: Processing the Lit Environment  
(PC020404\_2010\_apeon)**



**Sexuality & Light: Manifestations of Sexuality in Light  
(PC020404\_2010\_cllaneza)**



**Glow and its Relation to Art, its Environment, and the Subjective  
Viewer (PC020404\_2010\_cwalker)**



**Blighting Vacancy: Reinvigorating Neglected Terrain  
(PC020404\_2010\_ddelrosario)**



**Sheltering Light (PC020404\_2010\_fbastiani)**



**Urban Lighting Design: A New Dialogue (PC020404\_2010\_hkoo)**



**Shadow Architecture (PC020404\_2010\_hmilne)**



**Experiencing Light within the Urban Context (PC020404\_2010\_kpalecek)**



**Lightforms: Light as a Building Material (PC020404\_2010\_kstigliano)**



**New Urban Lighting Perspective: Toward a Light of Social Well Being (PC020404\_2010\_mlee)**



**Digital Lighting for Architecture (PC020404\_2010\_mreifsteck)**



**Light As A Social Renovator: Building a Sense of Community in the Neighborhood (PC020404\_2010\_mvillegas)**



**Brighter Ideas: Sunlighting the City of Tomorrow  
(PC020404\_2010\_ntucker)**



**Sub-Terra Aperatures: Shedding (Natural) Light On Pennsylvania  
Station (PC020404\_2010\_skaye)**



**Lighting Experience with Architecture (PC020404\_2010\_swu)**



**Communicating Light: New Graphic Standard for Visual  
Communication (PC020404\_2011\_dhyun)**



**Sacred Lighting: Exploring the Spiritual Relationship of Light within  
Religious Contexts (PC020404\_2011\_dkradolfer)**



**What We Should Know About Red as Lighting Professionals?  
(PC020404\_2011\_eareshina)**



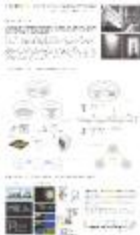
**Patterns Of Light: In the Junctions of Broadway**  
(PC020404\_2011\_echo)

Body : Control : Source

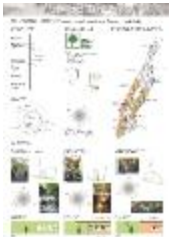


**Body, Control, Source: In the Junctions of Broadway**  
(PC020404\_2011\_jjeunnette)

Re-Imagined Lighting Controls, Interactions



**Unfolding Light: In Search of its Pure Form and Movement**  
(PC020404\_2011\_jpark)



**Interconnection: Vitalizing Privately Owned Public Space through Light**  
(PC020404\_2011\_jseo)



**The Poetic Narrative Of Light And Darkness: Underground Space and the Tragedy of Victor Jara** (PC020404\_2011\_mlopez)



**Light, Space, Action: The Use of Natural Light and Color Medium to Enhance the Visual and Temporal Experience of Space**  
(PC020404\_2011\_nbartos)





**Altering Spatial Perception to Small Interiors with Restricted View through Lighting Design (PC020404\_2011\_pchang)**



**Luminance as an Alternative Metric for Lighting Design (PC020404\_2011\_rmintz)**



**Benefits Of Architainment In Contemporary Urban Design: Urban Lighting and Master Planning (PC020404\_2011\_sramirez)**



**Building Bird-Safe Cities: An Environmental Crisis (PC020404\_2012\_cchia)**



**Culture As A Guide To Activate Public Spaces By The Means Of Color Enhanced By Light (PC020404\_2012\_cmelendes)**



**User Takes Controls (PC020404\_2012\_jpark)**

- Light's Animate Object: Suggesting Relationships through Lighting Design (PC020404\_2012\_mherman) 1
- Crossing Through Weatherlight: Amplifying & Adapting the Williamsburg Bridge (PC020404\_2012\_npriwin) 1
- Brightness: An Emotional Response (PC020404\_2012\_skaplan) 1
- Chiaroscuro for Architectural Lighting Design (PC020404\_2012\_skuevibulvanich) 1
- The Urban Spectacular: Lighting Spectacle as a Tool for Design (PC020404\_2012\_ssnodgrass) 1
- Adapting Light (PC020404\_2012\_ssnov) 1

**Lighting the Path to Perceptual Richness  
(PC020404\_2012\_larensberg)**



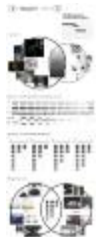
**Light's Animate Object: Suggesting Relationships through Lighting Design (PC020404\_2012\_mherman)**



**Crossing Through Weatherlight: Amplifying & Adapting the Williamsburg Bridge (PC020404\_2012\_npriwin)**



**Brightness: An Emotional Response (PC020404\_2012\_skaplan)**



**Chiaroscuro for Architectural Lighting Design (PC020404\_2012\_skuevibulvanich)**



**The Urban Spectacular: Lighting Spectacle as a Tool for Design (PC020404\_2012\_ssnodgrass)**

- Lighting the Path to Perceptual Richness (PC020404\_2012\_larensberg) 1
- Light's Animate Object: Suggesting Relationships through Lighting Design (PC020404\_2012\_mherman) 1
- Crossing Through Weatherlight: Amplifying & Adapting the Williamsburg Bridge (PC020404\_2012\_npriwin) 1
- Brightness: An Emotional Response (PC020404\_2012\_skaplan) 1
- Chiaroscuro for Architectural Lighting Design (PC020404\_2012\_skuevibulvanich) 1
- The Urban Spectacular: Lighting Spectacle as a Tool for Design (PC020404\_2012\_ssnodgrass) 1
- Adapting Light (PC020404\_2012\_ssnov) 1

**Adapting Light (PC020404\_2012\_ssnov)**



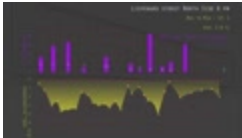
**Illuminating Connections (PC020404\_2013\_bjun)**



**Content-Laden Light: Can It Foster Human Relationships? (PC020404\_2013\_cwilson)**

□

**Light Sequences: Daylight and Electric Light Integration in the Casino Project Typology (PC020404\_2013\_nesacaona)**



**Productions of Space: Lighting the Street's Social Practice (PC020404\_2013\_eyelonek)**



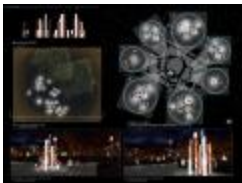
**Daylight in a Ceramics Museum (PC020404\_2013\_hpark)**



**Lighting Up the Heart of the City (PC020404\_2013\_jtsai)**



**A Visuo-spatial Journey of Light (PC020404\_2013\_jchoi)**



**Light as an Urban Placemaker (PC020404\_2013\_kjajalla)**

□

**Designing for and with the circadian system (PC020404\_2013\_kpalmore)**



**The Modulation of Wavelengths as a Preventative Treatment for Migraines (PC020404\_2013\_mberriosalbino)**

PC020404\_2013\_msong

Above the Clouds

**Above the Clouds (PC020404\_2013\_msong)**

PC020404\_2013\_ndeleon



**Deconstructing White Light (PC020404\_2013\_ndeleon)**



**Recalibrating the Urban Experience: Infrastructure Exposed (PC020404\_2013\_parroyo)**



**Revealed Adjacencies: Spatial Simultaneity in the Urban Strata (PC020404\_2013\_rbst)**

PC020404\_2013\_ykim

Establishing Visual Identity in the Underground World

**Establishing Visual Identity in the Underground World (PC020404\_2013\_ykim)**

PC020404\_2014\_britz

How We Buy Light

**How We Buy Light (PC020404\_2014\_britz)**

PC020404\_2014\_chano

Humanizing Urban Lighting

**Humanizing Urban Lighting – Shifting From Vehicular to a Human Oriented Lighting Approach (PC020404\_2014\_chano)**



**Light Environments (PC020404\_2014\_dnowak)**




**Honestly For You: A Personalized Shopping Experience through Light and Color (PC020404\_2014\_ewerner)**



**Constant change: Utilizing dynamic lighting in the built environment (PC020404\_2014\_gbarret)**



**Architectural Lighting Design for Visually Impaired People in Public Space (PC020404\_2014\_hwang)**



**Enhancing Human Experience in a Confined Environment through Light Interaction (PC020404\_2014\_isanchez)**



**Urban Therapy (PC020404\_2014\_jbae)**



**Promoting the Progression of Circadian Cycles in the Subway (PC020404\_2014\_jruiz)**

TEXTURED LIGHT

TEXTURED LIGHT  
BY KZACHRISSON

**Textured Light (PC020404\_2014\_kzachrisson)**

THE DIM

BY MHAWKINS

THE DIM

BY MHAWKINS

**The Dim (PC020404\_2014\_mhawkins)**



**Light the Bike-Scapes: Define an Optimal Lighting Condition for NYC Bike Path (PC020404\_2014\_pyinguararuk)**



**Intangible Speculation: An Argument for the Third Dimension (PC020404\_2014\_tholden)**

ANXIOUSNESS REDUCER

TRAIN STATION LIGHTING

BY YLIU

ANXIOUSNESS REDUCER

TRAIN STATION LIGHTING

BY YLIU

**Anxiousness Reducer: Train Station Lighting (PC020404\_2014\_yliu)**

LIGHTING EDIBLE LANDSCAPE

BY AMAIN

LIGHTING EDIBLE LANDSCAPE

BY AMAIN

LIGHTING EDIBLE LANDSCAPE

BY AMAIN

LIGHTING EDIBLE LANDSCAPE

BY AMAIN

**Lighting Edible Landscape (PC020404\_2015\_ain)**



**Design Workshop Field House (PC020404\_2015\_bbrouaad)**



Waking Space (PC020404\_2015\_evaras)



Reframing Daylight Perception (PC020404\_2015\_fcastro)



Dancing Light (PC020404\_2015\_gmachado)



Community Light (PC020404\_2015\_jspinnato)



Reclamation Of Chinese Ancient Light (PC020404\_2015\_jwang)



A Spoonful Of Light (PC020404\_2015\_kyounes)



Contemporary Encounters: Wandering The Connected City (PC020404\_2015\_idillon)



Hilighting Identity (PC020404\_2015\_mkahale)



**Contrasting The Way (PC020404\_2015\_msmith)**

Mystified  
by Light



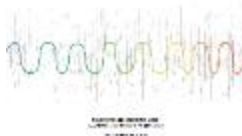
**Mystified By Light (PC020404\_2015\_pcastillo)**



**Feel Better And Work Better With Dynamic Light (PC020404\_2015\_seulkikim)**



**Support/Structures For Living (PC020404\_2015\_ssmitchell)**



**Seeing Sound, Hearing Light: A Sensual Experience Of Time And Space (PC020404\_2015\_vresurreccion)**



**Live In The Colors Of The Colorblind (PC020404\_2015\_zren)**



**The Doctor Will See You Now: Redefining Care Within An Informal Patient-Provider Interface (PC020404\_2016\_achandler)**



**Gendered Lighting: Gender, Fear And Light In Urban Night Environments (PC020404\_2016\_agovil)**





**Through Light (PC020404\_2016\_anowailaty)**



**Tune Your Commute: White Tunable Light In The Mta Transit Section (PC020404\_2016\_ashin)**



**Dynamic Lighting Design In Response To Live Performance (PC020404\_2016\_dozminkowski)**



**The Collective View (PC020404\_2016\_dvancamp)**



**Be Hidden, Be Seen: Lighting Design Solutions For Preventing Roadkill (PC020404\_2016\_hson)**



**Surface Matters: Exposing The Architectural Blindspot (PC020404\_2016\_jgoot)**



**Agency Through Ad Hoc: Place Making In The Civic Interior (PC020404\_2016\_jjune)**



**Place As Lightmaker: Light As Placemaker (PC020404\_2016\_kfares)**



**The New Urban Interior: An Exploration Of Coastal Flooding And The Domestic Interior (PC020404\_2016\_khill)**



**Light Park: Daylighting Performance Space (PC020404\_2016\_kwybieralska)**



**Somaspace: The Kinesthetic Void In Contemporary Architecture (PC020404\_2016\_idieter)**



**Mourning With Light: Exploring The Relationship Of Light, Space & Emotion And How It Can Support The Healing Process Of A Grieving Person (PC020404\_2016\_nventa)**



**Light And Emotion In Hospital Environments (PC020404\_2016\_rwu)**



**Me, Myself And Her: Self Perception And Lighting In Retail Environments (PC020404\_2016\_sergeneli)**



**The Blue Effect: Using Blue Enriched White Light To Improve The Nightshift Environment (PC020404\_2016\_shewett)**



**Illuminate The Fertile Void (PC020404\_2016\_smuangkeo)**



**Shift (PC020404\_2016\_tmnich)**



**Analysing A New Building's Shading Impact In Dense Urban Environments (PC020404\_2016\_ychen)**



**Light Lines (PC020404\_2016\_yhwang)**



**Stay Comfortable, Arrive Alive: Midtown-Queens Tunnel Lighting Design (PC020404\_2016\_ykang)**



**In/N Performance (PC020404\_2016\_ysavelyeva)**



**Sense The Moment: An Experiential Re-Design Of The Everyday Interior (PC020404\_2016\_yzhang)**



**Improve Light: Improve Life in Refugee Camps**  
(PC020404\_2017\_eozerdem)



**The Mediation: Mediating the Light** (PC020404\_2017\_hchaar)



**Life on Mars: Lighting Hope for Human Survival**  
(PC020404\_2017\_hmirdamadi)



**Light Boundary: A Case for the Urban Night Environment**  
(PC020404\_2017\_ksamranvedhya)



**Light, Color, and Shadow: Experiencing Colored Light and Shadow Phenomena** (PC020404\_2017\_mkim)



**Advocacy for Social Integration in Urban Context**  
(PC020404\_2017\_ntraboulsi)



**Spatial Perception of Texture and Associated Emotion**  
(PC020404\_2017\_parguelles)



**Shrinking the Bubble: Lighting Design to Reduce Stress in Densely Populated Spaces (PC020404\_2017\_sbenchahiransak)**



**Lit by Design 1.0: Let's Light Your Home! (PC020404\_2017\_sdlinn)**



**Heighten Perceptual Experience of Light and Sound Synergy (PC020404\_2017\_smosbeh)**



**The Effect of Light on Perception of Time in Healthcare Environments (PC020404\_2017\_vqin)**



**A Journey of Re-Discovering Light (PC020404\_2017\_wchan)**



**The Façade: The Exploration and Manipulation of Roof (PC020404\_2017\_acarvajal)**



**Urban Sanatorium: Re-Envisioning Sanatoriums for Post-Disaster  
Emergency Relief (PC020404\_2017\_amathews)**



**Frontierspace (PC020404\_2017\_bpietras)**



**Sk/in/side Facades (PC020404\_2017\_bschuetz)**



**Tactical Teaching: Re-Examined Details for Urban Education  
(PC020404\_2017\_jdrummond)**



**Interhub: Digitized Body in the City (PC020404\_2017\_mdong)**



**Adaptability (PC020404\_2017\_mthai)**



**123\_213\_312: Architecture as Activator and Animator: the Intersection of Community, Culture, Food, Train and Form, Activated by Light (PC020404\_2017\_staveras)**



**The 2(100): A Community of Temporary Housing Along the Triboro RX (PC020404\_2017\_ttaniguchi)**



**Selfscape: Transformations (PC020404\_2017\_cwarther)**



**Remembering the Future (PC020404\_2017\_erothernbuhler)**



**Pod: Supporting Social Equity through Interiority (PC020404\_2017\_losborn)**



**Queer Self/Embodied Differences (PC020404\_2017\_msantos)**



**The Monotony of Monotony: Disrupting the Everyday**  
(PC020404\_2017\_sfoster)

---



**Beneath the Surface: Rethinking Urban School Food Systems**  
(PC020404\_2017\_tjani)

---



**Unusual Activity at Usual Site** (PC020404\_2017\_wzhang)

---