



Joseph Marcella (KA0123_b01_f01_01)



Architectural and Engineering News article featuring Joseph Marcella's chair (KA0123_b01_f04_06)



Elevation drawing of chair (KA0123_kOSx4_f10_01)



Reproduction of elevation drawing of chair (KA0123_kOSx4_f10_02)



Drawing depicting how chairs can be stacked (KA0123_kOSx4_f10_03)



Reproduction of drawing depicting how chairs can be stacked (KA0123_kOSx4_f10_04)



Pencil sketch of chairs (KA0123_kOSx4_f10_05)



Pencil sketch of chairs (KA0123_kOSx4_f10_06)



Marker sketch from spiral notebook (KA0123_b01_f08_01)



Marker sketch (KA0123_b01_f08_02)



Marker sketch (KA0123_b01_f08_03)



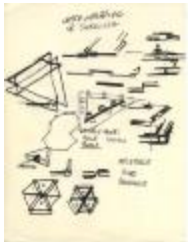
Marker sketch titled "semi-inflatable" (KA0123_b01_f08_04)



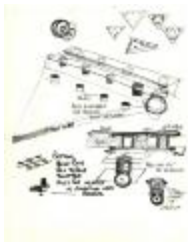
Marker sketch (KA0123_b01_f08_05a)



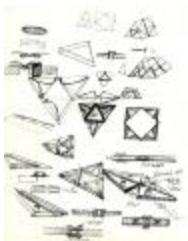
Marker sketch (KA0123_b01_f08_05v)



Layer Wrapping or Shingling (KA0123_b01_f08_06)



Marker sketch (KA0123_b01_f08_07)



Marker sketch (KA0123_b01_f08_08)



Handwritten document "Breakdown of M.E.S.S." (KA0123_b01_f08_09)



Handwritten document "3. Portable Shelter" (KA0123_b01_f08_10)



Handwritten document "Research the existing line of tents and portable living environments" (KA0123_b01_f08_11)



Handwritten document "Primary use of prefab structural building panels" (KA0123_b01_f08_12)



Handwritten document "Possibilities with this system" (KA0123_b01_f08_13)



Construction of a M.E.S.S. Unit (KA0123_b01_f09_01)



Construction of a M.E.S.S. Unit (KA0123_b01_f09_02)



Black and white photograph of stackable fiberglass chair (3/4 front view, looking down) (KA0123_kOSx4_f10_07)



Black and white photograph of stackable fiberglass chair (side view) (KA0123_b01_f04_01)



Black and white photograph of stackable fiberglass chair (rear view) (KA0123_b01_f04_02)



Black and white photograph of stackable fiberglass chair (front view) (KA0123_b01_f04_03)



Black and white photograph of stackable fiberglass chair (3/4 view) (KA0123_b01_f04_04)



Typed description of "stacking plastic armchair" (KA0123_b01_f04_05)



**Danny Gildesgame Comprehensive Anticipatory Design Scientist
(KA0123_kOSx4_f09_01)**



**Neato Inflato Structures at the Environmental Teach-In
(KA0123_kOSx4_f09_02)**



**Stewart Brand Originator of the Whole Earth Catalog
(KA0123_kOSx4_f09_03)**



**Immanuel Velikovsky Speaks on Cosmic Upheaval
(KA0123_kOSx4_f09_04)**



**Press release photograph for Armco Student Design Program
depicting Joseph Marcella (KA0123_b01_f07_02)**



**Black and white photograph of hands constructing M.E.S.S. model with
black background (KA0123_b01_f09_03)**



**Black and white photograph of hands constructing M.E.S.S. model with
gray background (KA0123_b01_f09_04)**



Black and white photograph of hands constructing M.E.S.S. model with white background (KA0123_b01_f09_05)



M.E.S.S. (KA0123_b01_f09_06)



Black and white photograph of a tensegrity constructed from wire mesh (KA0123_b01_f09_07)



Reflective Object in Pine Tree (KA0123_b01_f13_s01)



Reflective Object in Dark Woodland Setting (KA0123_b01_f13_s02)



Paper Model of Modular Design on Forest Floor Amid Rocks (KA0123_b01_f13_s03)



Detail of Modular Environmental Structural System, or M.E.S.S. (KA0123_b01_f13_s04)



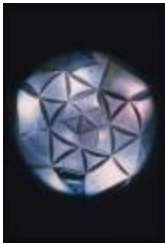
Modular Design Constructed from Reflective Material in Pine Tree (KA0123_b01_f13_s05)



Two Modular Designs Constructed from Reflective Material Set in Bed of Small Stones (KA0123_b01_f13_s06)



Paper Model of Modular Design Set Amid Stones (KA0123_b01_f13_s07)



Detail of Modular Environmental Structural System, or M.E.S.S. (KA0123_b01_f13_s08)



Modular Design Constructed from Reflective Material in Pine Tree (KA0123_b01_f13_s09)



Modular Design Constructed from Reflective Material in Pine Tree (KA0123_b01_f13_s10)



Modular Design Constructed from Reflective Material in Grass (KA0123_b01_f13_s11)



Modular Design Constructed from Reflective Material in Grass (KA0123_b01_f13_s12)



Modular Design Constructed from Reflective Material in Pine Tree (KA0123_b01_f13_s13)



**Detail of Modular Environmental Structural System, or M.E.S.S.
(KA0123_b01_f13_s14)**



**Modular Design Constructed from Reflective Material in Grass
(KA0123_b01_f13_s15)**



Paper Model of Modular Design Set in Soil (KA0123_b01_f13_s16)



**Joseph Marcella Posing with His Modular Environmental Structural
System, or M.E.S.S. (KA0123_b01_f13_s17)**



**Modular Design Constructed from Reflective Material on Forest Floor
(KA0123_b01_f13_s18)**



**Full Size Modular Design Constructed from Reflective Material in a
Field (KA0123_b01_f13_s19)**



**Full Size Modular Design in Process of Being Assembled or
Disassembled (KA0123_b01_f13_s20)**



**Pieces of Full Size Modular Design in Back of and Leaning on Car
Parked in a Driveway (KA0123_b01_f13_s21)**



Full Size Modular Design Constructed from Reflective Material in a Field (KA0123_b01_f13_s22)



Modular Environmental Structural System, or M.E.S.S., in Second Floor Building Window as Seen from Street (KA0123_b01_f13_s23)



Person Seated Inside Full Size Modular Design Constructed from Reflective Material (KA0123_b01_f13_s24)



Pieces of Full Size Modular Design in Field (KA0123_b01_f13_s25)



Parsons School of Design Auditorium on Earth Day (KA0123_b01_f03_01)



Neato Inflato Structure in Auditorium (KA0123_b01_f13_s58)



Detail of Neato Inflato Structure (KA0123_b01_f13_s59)



Stage in Parsons School of Design Auditorium (KA0123_b01_f13_s61)



Neato Inflato Structure in Hallway (KA0123_b01_f13_s62)



Neato Inflato Structures (KA0123_b01_f13_s63)



Neato Inflato Structure in Auditorium (KA0123_b01_f13_s64)



Immanuel Velikovsky Speaking at Podium (KA0123_b01_f13_s65)



Parsons School of Design Students at Earth Day Teach-in
(KA0123_b01_f13_s66)



Neato Inflato Structures (KA0123_b01_f13_s67)



Neato Inflato Sculpture in Hallway (KA0123_b01_f13_s68)



Stewart Brand Speaking on Stage (KA0123_b01_f13_s69)



Detail of Earth Day Balloons on Neato Inflato Structure (KA0123_b01_f13_s70)



Neato Inflato Structure in Hallway (KA0123_b01_f13_s72)



Michael Rosenthal Speaking at Podium (KA0123_b01_f13_s73)



Neato Inflato Structure in Auditorium (KA0123_b01_f13_s74)



Neato Inflato Structures (KA0123_b01_f13_s75)



Stewart Brand Speaking on Stage (KA0123_b01_f13_s76)



Earth Day Environmental Teach-In (KA0123_000010)



Typed rejection letter from InterRoyal Corporation to Joseph Marcella explaining why the firm is not interested in manufacturing his fiberglass chair (KA0123_b01_f04_12)