



Set of Sketches Depicting an Evening Coat, Evening Cape, and Two Evening Dresses (KA0039_V8p03-001)



Navy Wool Women's Ensemble with Jabot Collar and Openwork (KA0039_V8p10-004)



Navy Point D'Esprit Women's Ensemble with Taffeta Slip (KA0039_V8p11-004)



Black Evening Dress with Sash Belt and Pleated Panels (KA0039_V8p11-008)



Royal Blue Net Evening Dress with Satin Band and Bows (KA0039_V8p12-006)



Floral Print Women's Ensemble with Matching Jacket (KA0039_V8p13-003)



Women's Black Velvet Dinner Suit with Red Chiffon Ascot and Handkerchief (KA0039_V8p14-008)



Women's Floral Printed Crepe Ensemble with Pink Accents and Matching Coat (KA0039_V8p18-007)



Black Crêpe Dress with Peplum Waist and White Puff Sleeves (KA0039_V8p18-008)



Long-Sleeved Print Dress with Jabot Collar (KA0039_V8p18-009)



Navy and White Striped Women's Ensemble with Jabot Collars and Floral Embellishments (KA0039_V8p19-007)



Three-Piece Women's Suit with Floral Printed Jabot Collar (KA0039_V8p19-009)



Black Coat Dress with Silk Braid Cords and Tassels (KA0039_V8p20-001)



Sheer Navy Women's Suit with Navy Lace Inserts (KA0039_V8p20-006)



Navy Blue Dress with Striped Coat and Matching Sash (KA0039_V8p39-006)



Field Flower Print Crêpe Evening Dress with Red Net Petticoat (KA0039_V8p46-003)



Brown Cloth Coat with "Windblown" Fullness Held by Shirred Rosettes (KA0039_V8p48-002)



Blue and Green "Crepey" Silk Dress with Two Large Bows (KA0039_V8p49-001)



Navy Blue Alpaca Evening Dress with White Pleated Mousseline Neckline and Matching Wrap Coat (KA0039_V8p49-002)



Black Crêpe Evening Dress with Cowl Back Embroidered in White Bugles (KA0039_V8p71-001)



Pink and Silver Jacket with Long Satin Skirt (KA0039_V8p74-002)



Women's Black Tunic Evening Ensemble with Jewel Embellishments (KA0039_V8p76-005)



Black Satin Dress with Draped Bodice (KA0039_V8p77-003 (not scanned))



Black Jersey Shirt Dress with Bows and Floral Embellishments (KA0039_V8p78-003)



Black Taffeta Evening Dress with Lamé Applique (KA0039_V8p79-002)



Black Satin Evening Dress with Sunburst Pleats and Matching Net Cape (KA0039_V9p16-008)



Women's Beige Coat with White and Brown Printed Gilet and Handkerchief (KA0039_V9p22-001)



Blue and White Polka Dot Dress with Three Ruffled Red and White Polka Dot Collars (KA0039_V9p24-005)



Women's Black Wool Ensemble with Jet Beaded Embroidery (KA0039_V9p33-006)



Women's Daisy Print Suit with Pleated Skirt and Appliques (KA0039_V9p43-005)



Black Crêpe Evening Dress with Net Tiered Skirt and Black Satin Coat (KA0039_V9p46-008)



Blue Crêpe Evening Dress with Fringe Layered Skirt (KA0039_V9p51-009)



Long-Sleeved Black Wool Dress with Printed Accents (KA0039_V9p52-005)



Black Crêpe Evening Dress with Metallic Fabric Accents (KA0039_V9p53-008)



Long-Sleeved Black Wool Dress with Jet Bead Designs (KA0039_V9p58-002)



Short-Sleeved Grey Dress with Plaid Jabot Collar and Matching Coat (KA0039_V9p62-002)



Black Wool Women's Ensemble with Smocking and Button Accents (KA0039_V9p63-004)



Black Cotton Net Evening Dress with Ruffled Capelet Sleeves (KA0039_V9p64-007)



Women's Black CrÃ©pe Ensemble with Polka Dot Coat (KA0039_V9p65-001)



Women's Navy Coat with White Collar and Wool Bows (KA0039_V9p65-002)



Women's Black CrÃ©pe Suit with Field Flower Printed Fichu Collar (KA0039_V9p65-003)



Women's Ensemble with Jabot Collar and Small Ties (KA0039_V9p66-002)



Calf-Length Printed Chiffon Dress with Ruffled Cape (KA0039_V9p66-007)



Women's Floral Printed Chiffon Suit with Boutonniere (KA0039_V9p67-002)



Navy CrÃ©pe Dress with White Ruffled Gilet and Sleeve Cuffs (KA0039_V9p67-003)



Black Satin and Net Evening Dress with Hooded Cape (KA0039_V9p67-007)



Women's Ensemble with Floral Embellishments (KA0039_V9p68-001)



Women's Printed Suit with Shirred and Puffed Lapel (KA0039_V9p68-002)



Calf-Length Dress with Ruffled Square Neckline and Matching Cape (KA0039_V9p68-003)



Women's Ensemble with Long Box Coat and Surplice Top Dress (KA0039_V9p68-004)



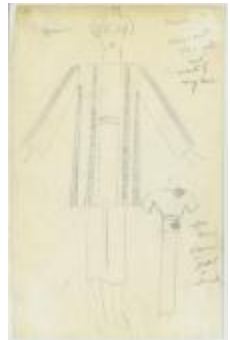
Floral Printed Evening Dress with Field Flower Wreath and Whale Boning (KA0039_V9p68-005)



Women's Evening Ensemble with Floral Embellished Net Cape (KA0039_V9p68-007)



Plaid Evening Dress with Net Bodice and Hooded Cape (KA0039_V9p68-009)



Sheer Navy Women's Suit with Navy Lace Inserts (KA0039_V9p69-001)



Women's Navy Taffeta Suit with Swagger Coat and White Eyelet Batiste Scarf (KA0039_V9p69-002)



Long-Sleeved Printed Dress with Pleated Panel and Matching Coat (KA0039_V9p69-003)



Green and White Printed Dress with Green Wool Coat (KA0039_V9p69-004)



Daisy Printed Women's Suit with Cut-Out Flowers and Green Lace Accents (KA0039_V9p69-005)



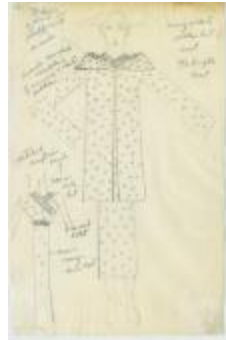
Daisy Printed Women's Suit with Floral Appliques (KA0039_V9p69-006)



Women's White Net Evening Cape with Smocked Yoke and Dot Appliques (KA0039_V9p69-007)



Blue and Printed Chiffon Evening Dress with Bolero Jacket (KA0039_V9p69-008)



Women's Navy and White Polka Dot Suit (KA0039_V9p70-002)



Women's Printed Suit with Boutonniere (KA0039_V9p70-003)



Women's Pale Blue Net Evening Cape with Blue Flower Appliques (KA0039_V9p70-007)



Women's Ensemble with Double-Breasted Check Print Jacket (KA0039_V9p71-003)



Women's Daisy Printed Crepe Evening Ensemble with Floral Appliques (KA0039_V9p72-007)



Crinkled Navy and Red Polka Dotted Evening Dress with Matching Caped Coat (KA0039_V9p72-008)



Black Slipper Satin Evening Dress with Shirred Flounce Skirt (KA0039_V8p01-008)



Purple Velvet Evening Dress with Shirred Flounce Skirt (KA0039_V8p04-007)



Women's Skirt Suit with Double Breasted Jacket and Embellished Lapel (KA0039_V8p05-006)



Calf-Length Wool Coat with Buttons at Neck and Waist (KA0039_V8p07-003)



Navy Wool Women's Ensemble with Cape Top and White Pique Edges (KA0039_V8p07-004)



Black CrÃ©pe Women's Suit with White
Organdie Flower Lei (KA0039_V8p07-005)



Calf-Length Dress with Two-Tiered Skirt
(KA0039_V8p07-006)



Women's Evening Ensemble with Three-
Tiered Emerald Net Skirt and Yellow Net
Top (KA0039_V8p10-008)



American Beauty Net and Satin Evening
Dress with Large Satin Shoulder Loops
(KA0039_V8p13-007)



Women's Evening Ensemble with
Embroidered Navy Wool Coat and Chiffon
Pleated Skirt (KA0039_V8p30-007)



Women's Ensemble with Green Tweed
Coat Featuring Black Horse Head Buttons
(KA0039_V8p31-005)



Women's Evening Ensemble with White
Bengaline Coat and Navy Chiffon Sunburst
Pleated Skirt (KA0039_V8p31-008)



Women's Evening Ensemble with Green
Plaid Taffeta Top and Black Net Skirt
(KA0039_V8p31-009)



Black Satin Evening Dress with Red and
Green Underskirt and Wrapped Yoke
(KA0039_V8p32-008)



Women's Striped Wool Coat with Shirred
Collar (KA0039_V8p33-004)



Brown and White Printed Chiffon Dress
with Brown Taffeta Flowers
(KA0039_V8p34-001)



Blue CrÃ©pe Long-Sleeved Wrap Dress
with Full Skirt (KA0039_V8p34-004)



Women's Ensemble with Pale Blue Wool Coat and Black Wool Box-Pleated Skirt (KA0039_V8p35-001)



Navy Wool Coat with Rounded Collar and White Piqué Banding (KA0039_V8p35-004)



Black Crêpe Evening Dress with Pink and Blue Beaded Embroidery in Flower Motifs (KA0039_V8p35-007)



Black Satin Evening Dress with Pink Pleated Net Sleeves (KA0039_V8p35-008)



Women's Striped Wool Ensemble with White Piqué Collar and Bow (KA0039_V8p37-001)



Women's Ensemble with Black and White Striped Coat and Beige Jersey Blouse (KA0039_V8p37-005)



Double Breasted Red Tweed Coat with Black Piping and Black Dress (KA0039_V8p37-007)



Navy and White Polka Dot Crepe Dress with Bishop Sleeves (KA0039_V8p40-001)



Navy Blue Dress with White Borders and Bows (KA0039_V8p40-003)



Navy Chiffon Evening Dress with Wrapped Bodice and Bows (KA0039_V8p40-009)



Navy Crepe Dress with White Collar and Cuffs (KA0039_V8p42-004)



Knee-Length Black Printed Dress with Ruffled Collar Embellishments (KA0039_V8p42-005)



White Crepe and Organza Evening Dress with Ruffled Neckline (KA0039_V8p42-008)



Floral Printed Net Evening Dress with a Royal Blue Satin Belt (KA0039_V8p44-05)



White Linen Coat with Brown Kerchief and Embellished Buttons (KA0039_V8p48-003)



Black Wool Double-Breasted Women's Coat with Fitted Waist and Gold Buttons (KA0039_V8p50-004)



Set of Four Sketches Depicting a Blue and Brown Ensemble and Navy Blue Satin and Tulle Evening Dress (KA0039_V8p52-001)



Navy and White Dotted Dress with a Vest-Like Bodice (KA0039_V8p52-003)



Set of Four Sketches Depicting Two Women's Ensembles and Two Views of a Puff-Sleeved Dress (KA0039_V8p53-002)



Set of Three Sketches Depicting a Black Evening Dress, Navy Crepe Dress, and Blue Coat with Painted Flower Buttons



Set of Three Sketches Depicting a Dress and Coat with Large Collar (KA0039_V8p55-001)



Set of Four Sketches Depicting a Women's Suit, Coat, and Two Dresses (KA0039_V8p55-004)



Set of Eight Sketches Depicting Various Evening Ensembles (KA0039_V8p55-005)



Black Chiffon Velvet Dress with Velvet and Mink Cape and Coral and Pearl Embellishments (KA0039_V8p70-002)



Black Satin Long-Sleeved Dinner Dress with Cut-Out Back and Large Stone Necklace (KA0039_V8p70-003)



Red Chiffon and Tulle Evening Dress with Yellow Flowers (KA0039_V8p71-004)



Pink Organdie Evening Dress with Royal Blue Tulip Print (KA0039_V8p72-002)



Thin Black Wool Dress with Black Net Petticoat and Floral Embroidery (KA0039_V8p74-004)



Black Taffeta Evening Dress with Bodice Embellishment and Matching Coat (KA0039_V8p76-001)



Evening Dress with Black Net Ruffles and Green Flower Corsage (KA0039_V9p02-008)



Wool Women's Suit with Gold Daisy Fluted Buttons (KA0039_V9p03-001)



Women's Ensemble with Printed Blouse and Black CrÃ©pe Pleated Skirt (KA0039_V9p05-005)



Navy Wool Dress with Ruffled Sleeves and White Flower Embellishments (KA0039_V9p06-002)



Black CrÃ©pe Women's Ensemble with White Lace Accents (KA0039_V9p06-003)



Black Wool Women's Ensemble with Jet Bugle and Cabochon Embroidery (KA0039_V9p09-003)



Black Wool Women's Ensemble with Multicolored Cellophane Embroidery (KA0039_V9p10-003)



Women's Checked Wool Ensemble with Piqué Facing (KA0039_V9p14-003)



Women's Black Wool Suit with Persian Lamb Trim (KA0039_V9p17-002)



Black Net Evening Dress with Multicolor Cabochon Jewel Embellishments (KA0039_V9p19-006)



Black Wool Bolero and Skirt with Red and White Checked Gingham Blouse and Flowers (KA0039_V9p21-003)



Women's Royal Blue Wool Suit with White Ermine Fur Embellishment (KA0039_V9p26-002)



Black Satin Evening Dress with Band of Gold Embroidery (KA0039_V9p26-006)



Pale Blue Pleated Crêpe Evening Dress with Gold Metal Embroidery (KA0039_V9p27-008)



Black Slipper Satin Evening Dress with Net Yoke and Leg-of-Mutton Sleeves (KA0039_V9p30-009)



Maroon Crêpe Evening Dress with Large Flower Embellishments (KA0039_V9p31-009)



Women's Black Crêpe Tunic Ensemble with Gold Embroidery (KA0039_V9p33-004)



Long Evening Dress with Floral Embellishment and Hanging Fabric (KA0039_V9p35-006)



Wine Colored Crêpe Dress with Velvet Flowers (KA0039_V9p38-003)



Black Crêpe Dress with Shirred Bow and Rhinestone Buttons (KA0039_V9p39-006)



Black Slipper Satin Evening Dress with Jet Bead Rope Necklaces (KA0039_V9p39-007)



Black Wool Dress with Indian Print Scarf and Sash Belt (KA0039_V9p41-005)



Evening Dress with Sheer Red Bodice and Red and Silver Printed Skirt (KA0039_V9p43-007)



Crêpe Evening Dress with Shirred Net Yoke (KA0039_V9p46-007)



Black Taffeta and Net Evening Dress with Pink Flower Corsage (KA0039_V9p48-005)



Pale Blue and Silver Printed Evening Dress (KA0039_V9p50-007)



Black Crêpe Evening Dress with Colored Bead and Gold Thread Border (KA0039_V9p57-009)



Black Satin Dress with Velvet Bands and Rhinestone Flower Belt (KA0039_V9p58-003)



Royal Blue Crêpe Evening Dress with Braided Strips (KA0039_V9p60-008)



Navy Crepe Evening Dress with Draped Panel (KA0039_V9p70-008)



Public Health Nurse (KA0023_b01_f11_01)



She's Your Public Health Nurse
(KA0023_kOSxx2_f06_01)



Women's Evening Ensemble with Double-Breasted Top and Fichu Wrap
(KA0038_000126)



Evening Dress with Beaded Trim and Matching Stole (KA0038_000127)



Long-Sleeved Evening Dress with Low-Slung Girdle (KA0038_000130)



Long-Sleeved Navy Evening Dress with Low-Slung Girdle (KA0038_000129)