



Musicians (KA0042_000007)



Musicians (KA0042_000008)



Pierre as a Baby (KA004201_b01_f01_01)



Portrait of Young Adult (KA004201_b01_f01_02)



Child's Portrait (KA004201_b02_f01_02)



Architecture and Documents, Louis XIV Period (PIC03002_b09_f07_01)



Life Drawing Class (KA0090_b01_f13_03)



Press clippings 1: 1918-1935 May, 1939 (NS030101_PC_01_OCR)



New York School of Fine and Applied Art 1920 Summer (PC050101_pg1920su)



Yearly Catalogue of the New York School of Fine and Applied Art 1920-1921 (PC050101_pg1920ye)



Upholstered Chair and Screen (KA0048_g01_f03_01)



Sideboard with Open Doors (KA0048_g01_f04_01)



Woven Wood Sideboard (KA0048_g01_f05_01)



Model Living Room (KA0048_g02_f02_01)



Living and Dining Room Interior (KA0048_g02_f03_01)



In Court at Parsons School of Design, Mr. Abrahart, Mr. Gordon, Mr. Chittenden (doorway), Miss F. Glaser, Miss H. Glaser (PC040101_b07_f10_05)



Parsons School of Design Students in Caen, Bayeux (PC040101_b07_f11_03)



Parsons School of Design Students Posing on Steps in Beauvais (PC040101_b07_f11_02)



Costume from Student Production The Diplomat (PIC03002_b13_f08_01)



Cast on Stage (PIC03002_b13_f08_02)



New York School of Fine and Applied Art Students in Classroom (PIC03002_b17_f06_02)



Paris Ateliers Fashion Illustration Class (PIC03002_b17_f19_01)



Class in the Paris Ateliers (PC030201_b17_f19_02)



Class in the Paris Ateliers (PIC03002_b17_f19_03)



Students wearing smocks measure chairs in the Paris Ateliers (PC030201_b17_f19_04)



Classroom at Paris Ateliers (PIC03002_b17_f19_05)



New York School of Fine and Applied Art Students at Dining Table (PIC03002_b17_f20_01)



Students in Paris Ateliers (PC030201_b17_f20_02)



Students in Paris Ateliers (PC030201_b17_f20_03)



European Summer School Group (PIC03002_b17_f20_04)



William M. Odom in Paris Ateliers (PIC03002_b18_f12_01)



Messrs. Raiser, Nelson, Gibbs & Miss Eakin at the Lido (PC030201_b17_f21_04)



Place de la Bastille (PC030201_b17_f22_01)



Women's Glove (KA0067_000001)



Assortment of Women's Gloves with Seamed Fingers (KA0067_000002)



Wrist-Length Women's Gloves (KA0067_000003)



Corduroy Gloves with Crocheted Seams (KA0067_000004)



Assortment of Women's Gloves (KA0067_000005)



Diploma (KA0071_000026)



The New School for Social Research Announcement 1920-1921 (NS050101_ns1920ye)



The David Mannes Music School 1920-1921 (MM050101_mm1920ye)



Margaret McKay Tee Painting (KA0094_K07_f17_01)



New York School of Fine and Applied Art Students in Classroom
(PIC03002_b17_f06_03)



Students in Studio (PIC03002_b17_f07_01)



The New School for Social Research (NS030105_000659_pg67-70)



Letter from Frank Alvah Parsons to Margaret McKay Tee
(KA0094_k07_f16_02)



The Leaflet of The New School for Social Research Vol. 1, No. 1
(NS050601_Leaflet_1)



New York School of Fine and Applied Art 1921 Summer
(PC050101_pg1921su)



[General Catalogue of the] New York School of Fine and Applied Art 1921-1922 (PC050101_pg1921ye)



Affiliated Schools: Paris Ateliers, New York School of Fine and Applied Art 1921 (PC050101_pp1921ye)



Students at Work in the Paris Ateliers (PC030201_b17_f18_01)



Parsons School of Design Students, Paris Ateliers (PC030201_b17_f18_02)



Arrow Points to the Paris Ateliers (PC030201_b17_f22_02)



Annual Report of the Trustees of Museums and Other Institutions or Associations of Science, Literature, Art, History or Other Departments of Knowledge (PC010101_000003)



The Leaflet of The New School for Social Research Vol. 1, No. 2 (NS050601_Leaflet_2)



The New School for Social Research Announcement 1921-1922 (NS050101_ns1921ye)



The David Mannes Music School 1921-1922 (MM050101_mm1921ye)



Letter from Frank Alvah Parsons to Margaret McKay Tee (KA0094_k07_f16_03)



New York School of Fine and Applied Art 1922 Summer (PC050101_pg1922su)



New York School of Fine and Applied Art 1922-1923 (PC050101_pg1922ye)



Affiliated Schools: Paris Ateliers, NY School of Fine and Applied Art 1922 (PC050101_pp1922ye)



Introduction to the Course (KA003701_Introduction_b01_f01)



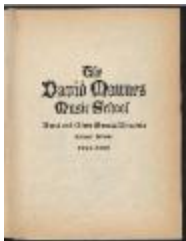
Lecture 20. The American Styles
(KA003701_Lecture_20_b02_f08_01)



Annual Report of the Trustees of Museums and Other Institutions or Associations of Science, Literature, Art, History or Other Departments of Knowledge (PC010101_000004)



The New School for Social Research Announcement 1922-1923
(NS050101_ns1922ye)



The David Mannes Music School 1922-1923 (MM050101_mm1922ye)



Notice for Course in Europe Taught by Frank Alvah Parsons and William Odom (KA0057_k5_f14_01)



New York School of Fine and Applied Art 1923 Summer
(PC050101_pg1923su)



New York School of Fine and Applied Art 1923-1924
(PC050101_pg1923ye)



Affiliated Schools: Paris Ateliers, NY School of Fine and Applied Art 1923 (PC050101_pp1923ye)



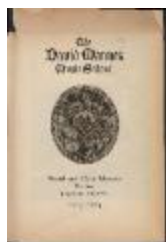
Adele Mowton (KA0071_000006)



The New School for Social Research 1923 Summer
(NS050101_ns1923su)



The New School for Social Research Announcement 1923-1924
(NS050101_ns1923ye)



The David Mannes Music School 1923-1924 (MM050101_mm1923ye)



Advertisement for Principles of Advertising Design by Frank Alva Parsons (KA0057_k05_f10_01)



Have You the Courage to Make Your Home—Artistic? (KA0057_000002)



Western Story magazine cover (KA0090_b01_f08_01)



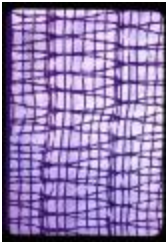
New York School of Fine and Applied Art 1924 Summer (PC050101_pg1924su)



New York School of Fine and Applied Art 1924-1925 (PC050101_pg1924ye)



Affiliated Schools: Paris Ateliers, NY School of Fine and Applied Art 1924 (PC050101_pp1924ye)



Textile Detail (KA0048_b01_f15_s02)



Early Interior Renderings (KA0048_b01_f15_s05)



Dunbar Catalog Covers (KA0048_b01_f15_s06)



Interior Rendering (KA0048_b01_f15_s08)



Two Chairs (KA0048_b01_f15_s16)



Bedroom Interior (KA0048_b01_f15_s44)



Dunbar Showroom (KA0048_b01_f15_s49)



**Correspondence from Frank Alvah Parsons to Francis Geck
(KA0052_b01_f05_01)**



**Correspondence from Frank Alvah Parsons to Francis Geck
(KA0052_b01_f05_02)**



**Dancer's Costume with Two-Tiered White Skirt and Black Trim
(KA0055_k04_f06_05)**



**Dancer's Costume with Wrap Coat and Multi-Tiered White Skirt with
Black Dots (KA0055_k04_f06_08)**



**Flamenco Style Dress with Fringe Trim and Red Accents
(KA0055_k04_f06_09)**



**Dancer's Costume with Multi-Tiered Black Dotted Skirt
(KA0055_k04_f06_11)**



New York School of Fine Art Students In Vestibule
(PIC03002_b17_f15_29)



Group from New York School of Fine and Applied Art
(PIC03002_b17_f15_30)



Group from New York School of Fine and Applied Art
(PIC03002_b17_f15_32)



New York School of Fine and Applied Art Students on Beach
(PIC03002_b17_f15_34)



New York School of Fine and Applied Art Students on Balcony
(PIC03002_b17_f15_43)



New York School of Fine and Applied Art Students by Fence
(PIC03002_b17_f15_47)



New York School of Fine and Applied Art Students Tour Ruins
(PIC03002_b17_f15_53)



New York School of Fine and Applied Art Students on Beach in Venice
(PC030201_b17_f15_58)



New York School of Fine and Applied Art Students in Bus
(PIC03002_b17_f21_02)



New York School of Fine and Applied Art Students in Bus
(PC030201_b17_f21_03)



Frank Alvah Parsons, Who Made Art a Democratic Thing
(KA0057_000001)



The New School for Social Research Announcement 1924 Fall
(NS050101_ns1924fa)



**The New School for Social Research Announcement 1925 Spring
(NS050101_ns1925sp)**



The David Mannes Music School 1924-1925 (MM050101_mm1924ye)



**New York School of Fine and Applied Art Students in Winter Coats
(PIC03002_b17_f21_01)**



**New York School of Fine and Applied Art 1925 Summer
(PC050101_pg1925su)**



**[Announcement] New York School of Fine and Applied Art 1925-1926
(PC050101_pg1925ye)**



Notes from Eleanor McMillen Brown Lecture (KA0075_k01_f04_01)



**New York School of Fine and Applied Art Students on Group Tour
(PIC03002_b17_f15_10)**



Man Inspecting Wall Paneling (PIC03002_b17_f15_11)



Women in Window (PIC03002_b17_f15_12)



**New York School of Fine and Applied Art Students on Group Tour
(PIC03002_b17_f15_13)**



**New York School of Fine and Applied Art Students atop a High Wall
(PIC03002_b17_f15_14)**



**New York School of Fine and Applied Art Students Congregate on
Stairs (PIC03002_b17_f15_15)**



**New York School of Fine and Applied Art Students with Statue
(PIC03002_b17_f15_16)**



New York School of Fine and Applied Art Students on Lawn
(PIC03002_b17_f15_17)



New York School of Fine and Applied Art Students with Topiary
(PIC03002_b17_f15_18)



New York School of Fine and Applied Art Students Exit Building
(PIC03002_b17_f15_19)



New York School of Fine and Applied Art Student on Wall
(PIC03002_b17_f15_20)



New York School of Fine and Applied Art Student Paints Outdoors
(PIC03002_b17_f15_21)



Portrait of New York School of Fine and Applied Art Student
(PIC03002_b17_f15_22)



New York School of Fine and Applied Art Students Dine
(PIC03002_b17_f15_23)



New York School of Fine and Applied Art Students on Bridge
(PIC03002_b17_f15_24)



Women in Gondola (PIC03002_b17_f15_25)



New York School of Fine and Applied Art Students Beneath Arch
(PIC03002_b17_f15_26)



Woman by Cottage (PIC03002_b17_f15_27)



Women with Chateau (PIC03002_b17_f15_28)



**New York School of Fine and Applied Art Students Tour Ruins
(PIC03002_b17_f15_31)**



Paris Ateliers Classroom (PIC03002_b17_f15_33)



**New York School of Fine and Applied Art Students Gather Amid Ruins
(PIC03002_b17_f15_35)**



**New York School of Fine and Applied Art Students Sit Outdoors
(PIC03002_b17_f15_36)**



**New York School of Fine and Applied Art Students on Bus
(PIC03002_b17_f15_37)**



**New York School of Fine and Applied Art Students Pass under
Archway (PIC03002_b17_f15_38)**



**New York School of Fine and Applied Art Students in Circle Formation
(PIC03002_b17_f15_39)**



New York School of Fine and Applied Art Students Outside Chapel
(PIC03002_b17_f15_40)



New York School of Fine and Applied Art Students in Courtyard
(PIC03002_b17_f15_41)



New York School of Fine and Applied Art Students Seated Along Wall
(PIC03002_b17_f15_42)



New York School of Fine and Applied Art Students Congregate, Smoke
(PIC03002_b17_f15_44)



New York School of Fine and Applied Art Students Tour Chateau
(PIC03002_b17_f15_45)



New York School of Fine and Applied Art Students in Classroom
(PIC03002_b17_f15_46)



New York School of Fine and Applied Art Students Outside Building
(PIC03002_b17_f15_48)



New York School of Fine and Applied Art Students with Musical Instruments
(PIC03002_b17_f15_49)



New York School of Fine and Applied Art Students Pose in Garden
(PIC03002_b17_f15_50)



Woman with Pigeons (PIC03002_b17_f15_51)



New York School of Fine and Applied Art Students Line-Dance
(PIC03002_b17_f15_52)



New York School of Fine and Applied Art Students Gather Outdoors
(PIC03002_b17_f15_54)



New York School of Fine and Applied Art Students Board Bus
(PIC03002_b17_f15_55)



New York School of Fine and Applied Art Students Dine
(PIC03002_b17_f15_56)



Man with Wall Paneling (PIC03002_b17_f15_57)



New York School of Fine and Applied Art Students Work in Villa Borghese (PIC03002_b17_f14_04)



Exterior, Florence Facilities, New York School of Fine and Applied Art (PIC03002_b17_f14_05)



New York School of Fine and Applied Art Student with Notebook (PIC03002_b17_f15_01)



New York School of Fine and Applied Art Student Sketches Outdoors (PIC03002_b17_f15_02)



New York School of Fine and Applied Art Students Swim (PIC03002_b17_f15_03)



New York School of Fine and Applied Art Students with Sketchbook (PIC03002_b17_f15_04)



**New York School of Fine and Applied Art Students at Pompeii
(PIC03002_b17_f15_05)**



**New York School of Fine and Applied Art Students in Water
(PIC03002_b17_f15_06)**



**Snapshots of New York School of Fine and Applied Art Students in
Italy and France (PIC03002_b17_f15_07)**



**New York School of Fine and Applied Art Student Charles T. Haight
(PIC03002_b17_f15_08)**



Exterior of Paris Ateliers (PC030201_b17_f16_01)



Exterior of Paris Ateliers (PIC03002_b17_f16_02)



**The New School for Social Research Announcement 1925 Fall
(NS050101_ns1925fa)**



The New School for Social Research Announcement 1926 Spring (NS050101_ns1926sp)



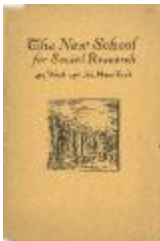
The David Mannes Music School 1925-1926 (MM050101_mm1925ye)



Frank Alvah Parsons (PIC03002_b18_f11_01)



Frank Alvah Parsons (PIC03002_b18_f11_03)



The New School for Social Research (NS030105_000019)



Letter from Frank Alvah Parsons to Mr. and Mrs. James Kerr (KA0106_k03_f03_01)



**NY School of Fine and Applied Art, Saturday and Special Courses
1926-1927 Winter (PC050101_pe1926wi)**



**New York School of Fine and Applied Art 1926 Summer
(PC050101_pg1926su)**



**New York School of Fine and Applied Art 1926-1927
(PC050101_pg1926ye)**



**Affiliated Schools: Paris Ateliers, NY School of Fine and Applied Art
1926-1927 (PC050101_pp1926ye)**



Special Summer Session General Schedule (KA0052_b01_f03_01)



Tours. Notice to Students. (KA0052_b01_f08_01)



Press clippings 2: 1926-1927 (NS030101_PC_02_OCR)



Parsons School of Design Students in Paris (1 of 4)
(PC040101_b07_f10_01)



Parsons School of Design Students in Paris (2 of 4)
(PC040101_b07_f10_02)



Parsons School of Design Students in Paris (3 of 4)
(PC040101_b07_f10_03)



Parsons School of Design Students in Paris (4 of 4)
(PC040101_b07_f10_04)



Dynamic Symmetry Notes and Drawings (KA012901_000001)



The New School for Social Research Announcement 1926 Fall
(NS050101_ns1926fa)



**The New School for Social Research Announcement 1927 Spring
(NS050101_ns1927sp)**



The David Mannes Music School 1926-1927 (MM050101_mm1926ye)



**General Suggestions for Visiting on Free Afternoons and after School
Hours (KA0052_b01_f03_03)**



Qualities for Successful Teaching (KA0052_b01_f03_04)



**NY School of Fine and Applied Art, Saturday and Special Courses
1927-1928 Winter (PC050101_pe1927wi)**



**New York School of Fine and Applied Art 1927 Summer
(PC050101_pg1927su)**



New York School of Fine and Applied Art 1927-1928
(PC050101_pg1927ye)



Affiliated Schools: Paris Ateliers, NY School of Fine and Applied Art
1927-1928 (PC050101_pp1927ye)



Annual Supper Dance (PIC05007-1_MCD5_f01_01)



Press clippings 3: 1927-1931 May, 1940-1941
(NS030101_PC_03_OCR)



Press clippings 4: 1927-1931 Apr, 1933, 1935, 1939
(NS030101_PC_04_OCR)



Frank Alvah Parsons Paris Student Poster Designs Charm Critics
Puzzle Him. July 10 1927. (PIC03002SB_vol1_01)



David Mannes (MA040101_000114)



David Mannes (MA040101_000115)



Camel (KA0122_000001)



Deer (KA0122_000002)



Antelope (KA0122_000003)



Deer (KA0122_000004)



Deer (KA0122_000005)



Deer (KA0122_000006)



Pelican (KA0122_000007)



The New School for Social Research Announcement 1927 Fall (NS050101_ns1927fa)



The New School for Social Research 1927-1928 Winter (NS050101_ns1927wi)



The David Mannes Music School 1927-1928 (MM050101_mm1927ye)



Frank Alvah Parsons with Assistant (PIC03002_b18_f10_02)



The New School Bulletin II November 14-18 (NS030102_bd271114)



Letter from Frank Alvah Parsons to Harry Baker (KA0090_b01_f03_01)



The New School Bulletin IV December 5-10 (NS030102_bd271205)



The New School Bulletin V December 12-17 (NS030102_bd271212)



NY School of Fine and Applied Art, Extension Courses 1928-1929 (PC050101_pe1928ye)



New York School of Fine and Applied Art 1928 Summer (PC050101_pg1928su)



**New York School of Fine and Applied Art 1928-1929
(PC050101_pg1928ye)**



**Affiliated Schools: Paris Ateliers, NY School of Fine and Applied Art
1928-1929 (PC050101_pp1928ye)**



Full Scale Drawing (KA004801_kOSxx2_f02_01)



Details for Mrs. Charles C. Renshaw (KA0048_000004)



Edward J. Wormley at Marshall Field's (KA0048_b01_f02_01)



Master Bath Illustration (KA004801_kOSxx2_f06_03)



Home Library Illustration (KA004801_kOSxx2_f06_04)



Scrapbook Page on the Palazzo del Te, Mantua (KA0063_b01_f06_01)



Pink Chair (KA0063_b01_f13_01)



New York School of Fine and Applied Art Students Work in Palazzo Ducale (PIC03002_b17_f14_03)



New York School of Fine and Applied Art Students at Pier (PC030201_b19_f19_04)



Memorial Epitaph (NS090101_000037)



Full Scale Lettering for Bernhard Mayer Auditorium Memorial Epitaph (NS090101_000038)



The New School for Social Research Report of the Director 1927-28 (NS010105_000006)



**The New School for Social Research Announcement 1928 Fall
(NS050101_ns1928fa)**



**The New School for Social Research 1929 Spring
(NS050101_ns1929sp)**



The David Mannes Music School 1928-1929 (MM050101_mm1928ye)



Frank Alvah Parsons with Staff (PIC03002_b18_f10_01)



Watercolor of Kimono with Floral Detail (KA0127_binder2_01)



The New School Bulletin VIII January 3-6 (NS030102_bd280103)



The New School Bulletin VI Winter Term January 3-March 26
(NS030102_bd280101_002)



The New School Bulletin XVI February 27-March 2
(NS030102_bd280227)



NY School of Fine and Applied Art, Extension Courses 1929-1930
(PC050101_pe1929ye)



New York School of Fine and Applied Art 1929 Summer
(PC050101_pg1929su)



New York School of Fine and Applied Art 1929-1930
(PC050101_pg1929ye)



Affiliated Schools: Paris Ateliers, NY School of Fine and Applied Art 1929
(PC050101_pp1929ye)



New School for Social Research Report of Committee on a Five-Year Program (NS010105_000004)



The New School for Social Research Announcement 1929-1930 Fall (NS050101_ns1929fa)



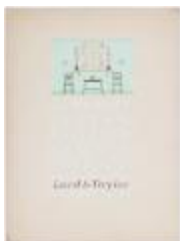
The David Mannes Music School 1929-1930 (MM050101_mm1929ye)



Sample Brochure for Gray Line Tours (KA007701_k01_f02_01)



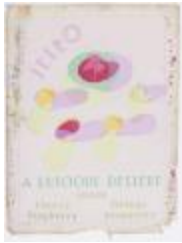
Sample Brochure for Gray Line Tours (KA007701_kOSxx1_f01_01)



Design for Sunfast Fabrics Advertisement (KA007701_kOSxx1_f01_02)



Sample Advertisement for Bloomingdale's (KA007701_kOSxx1_f01_03)



Sample Advertisement for Jell-O (KA007701_kOSxxx6_f04_01)



Evening Dress with Fringed Sash Belt (KA0067_000027)



The New Educational Program (NS030105_000505)



Building Program (NS030105_000506)



The New School Bulletin XII February 4-8 (NS030102_bd280204)



Letter from Alvin Johnson to Clara Mayer (NS020102_000003)